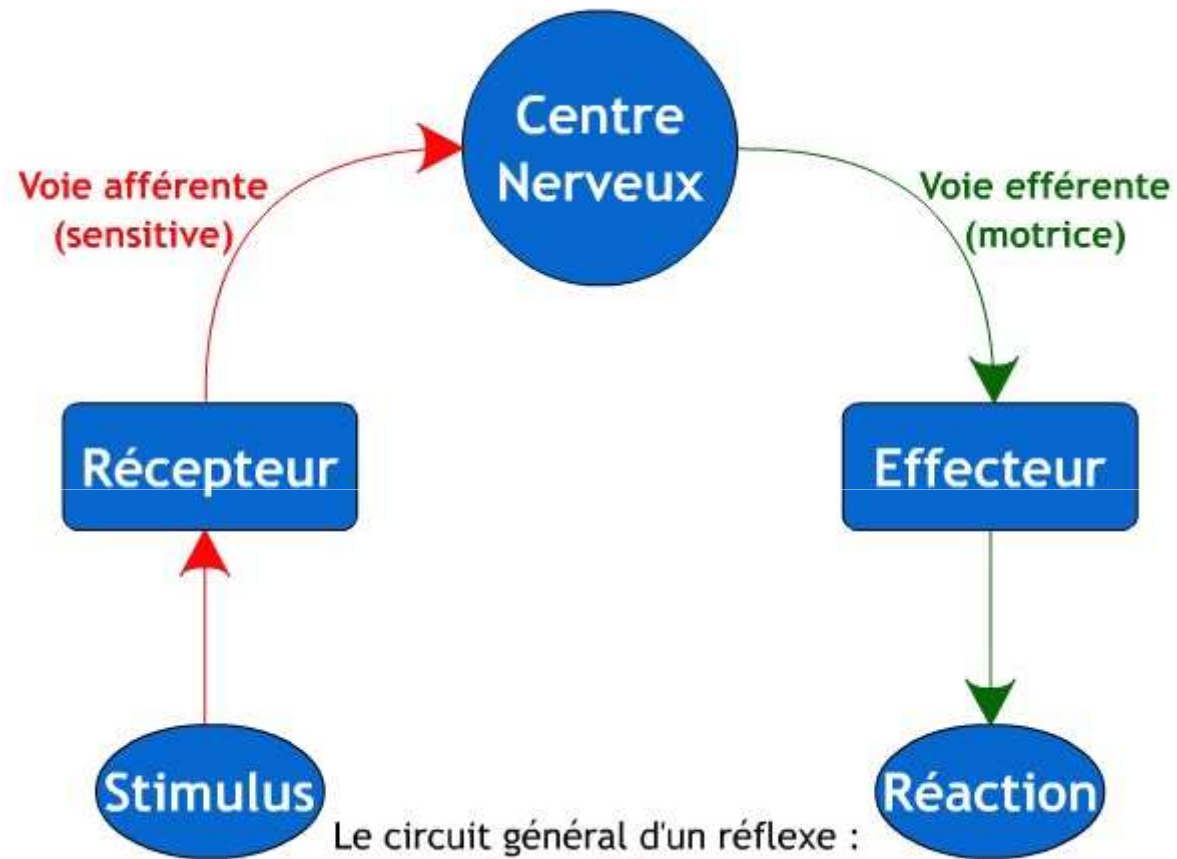
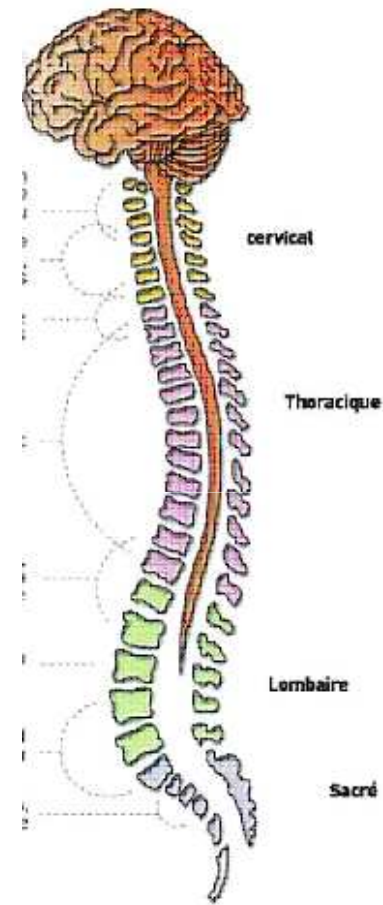
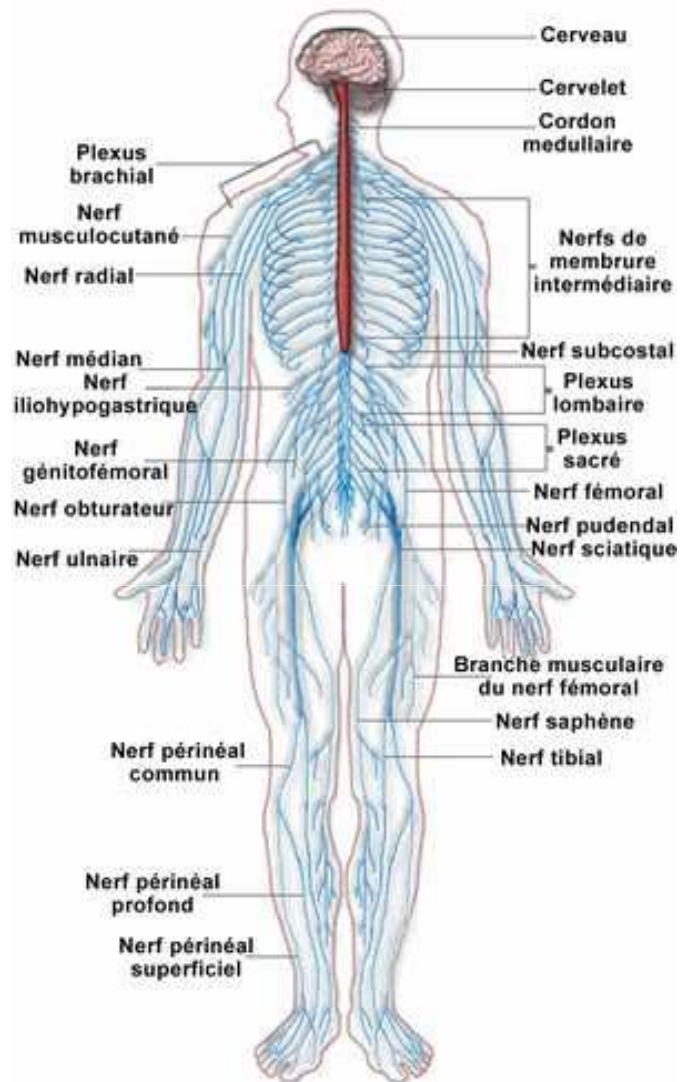


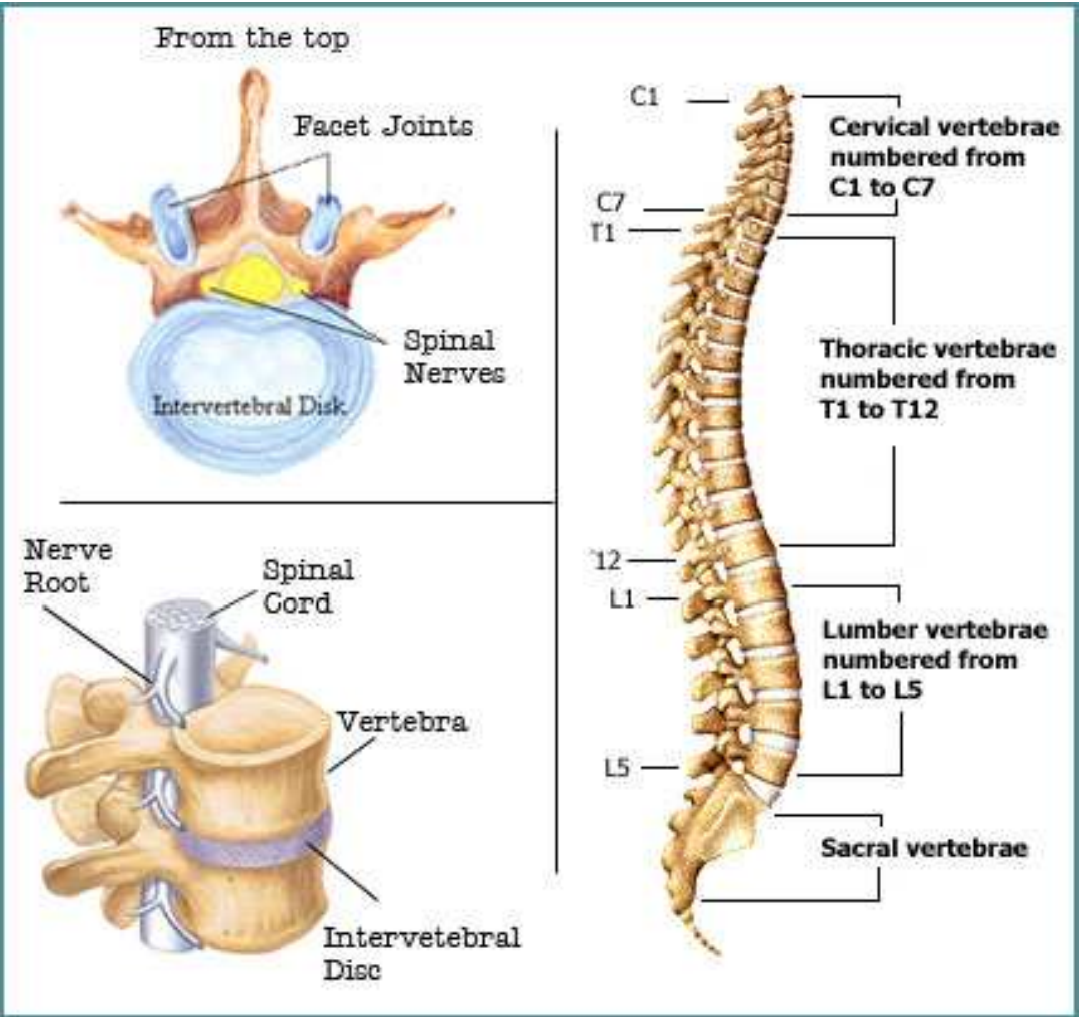
Le système nerveux

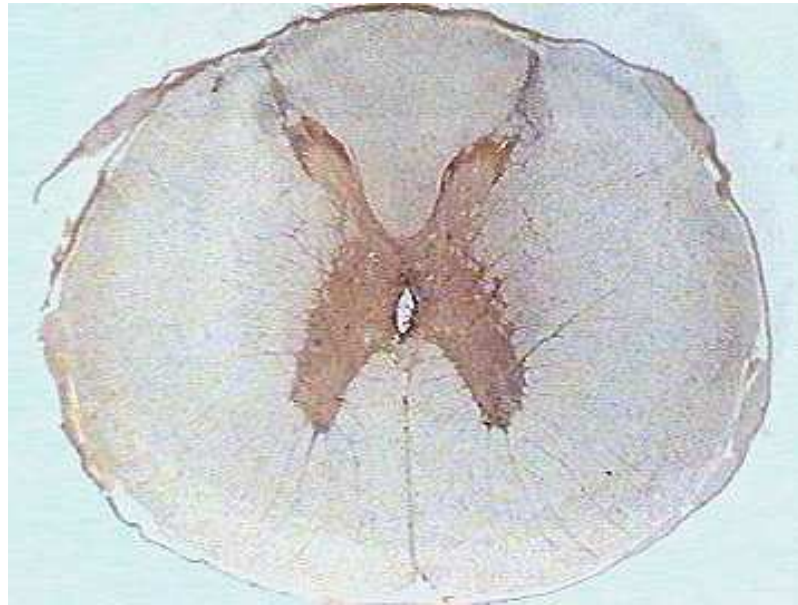
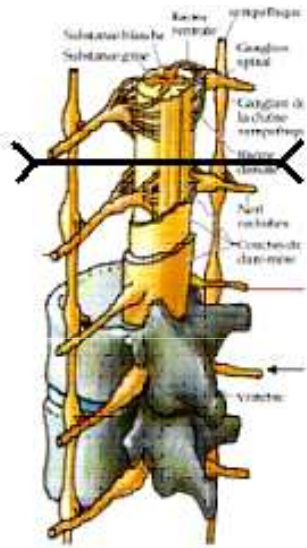


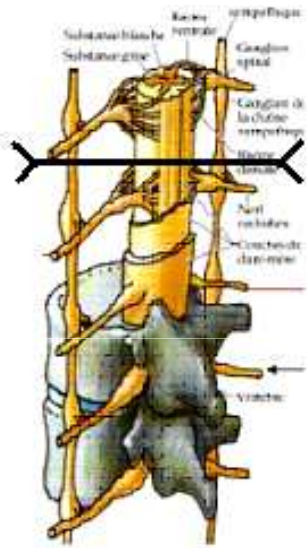


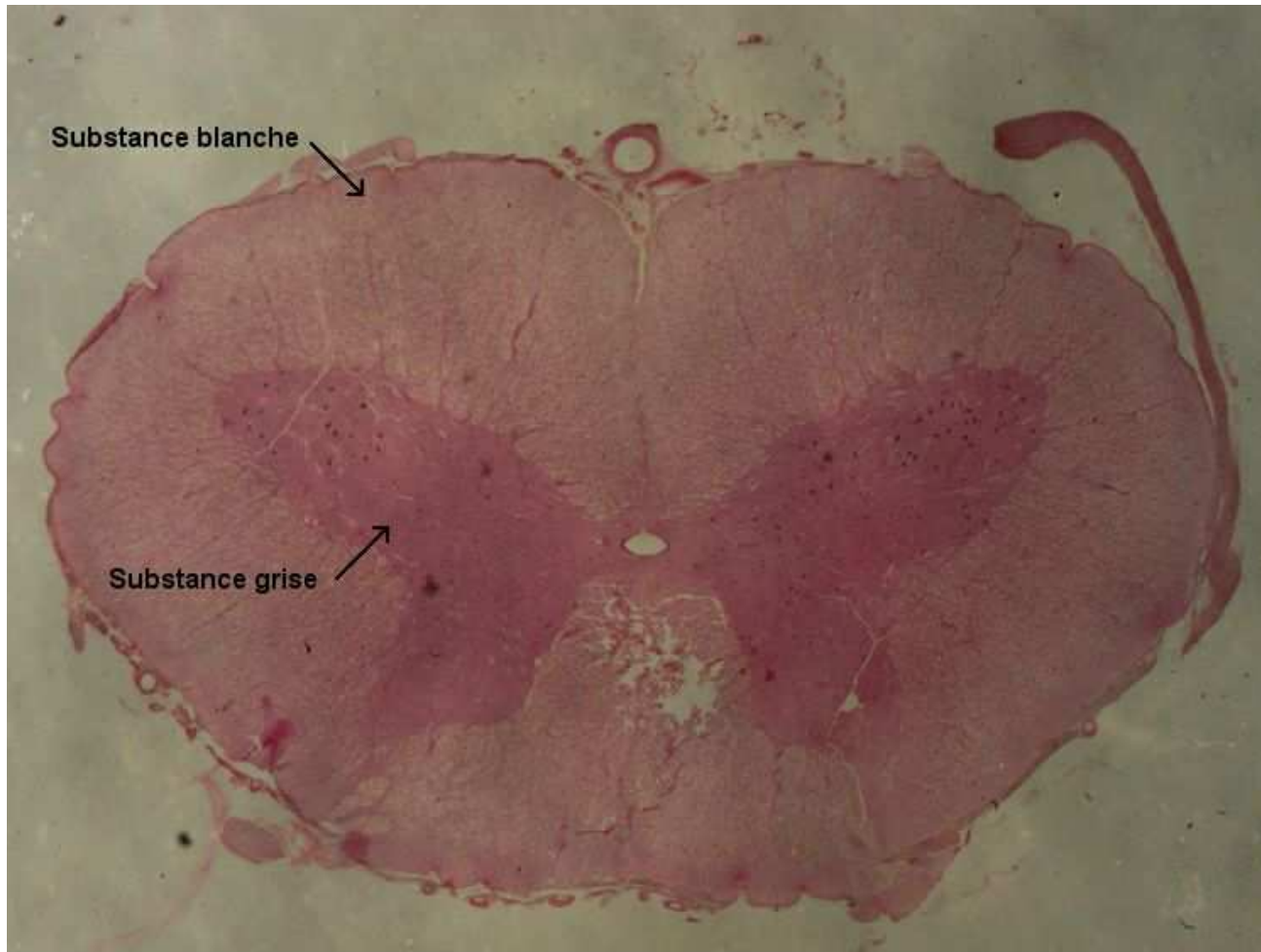
Le circuit général d'un réflexe :
L'arc réflexe









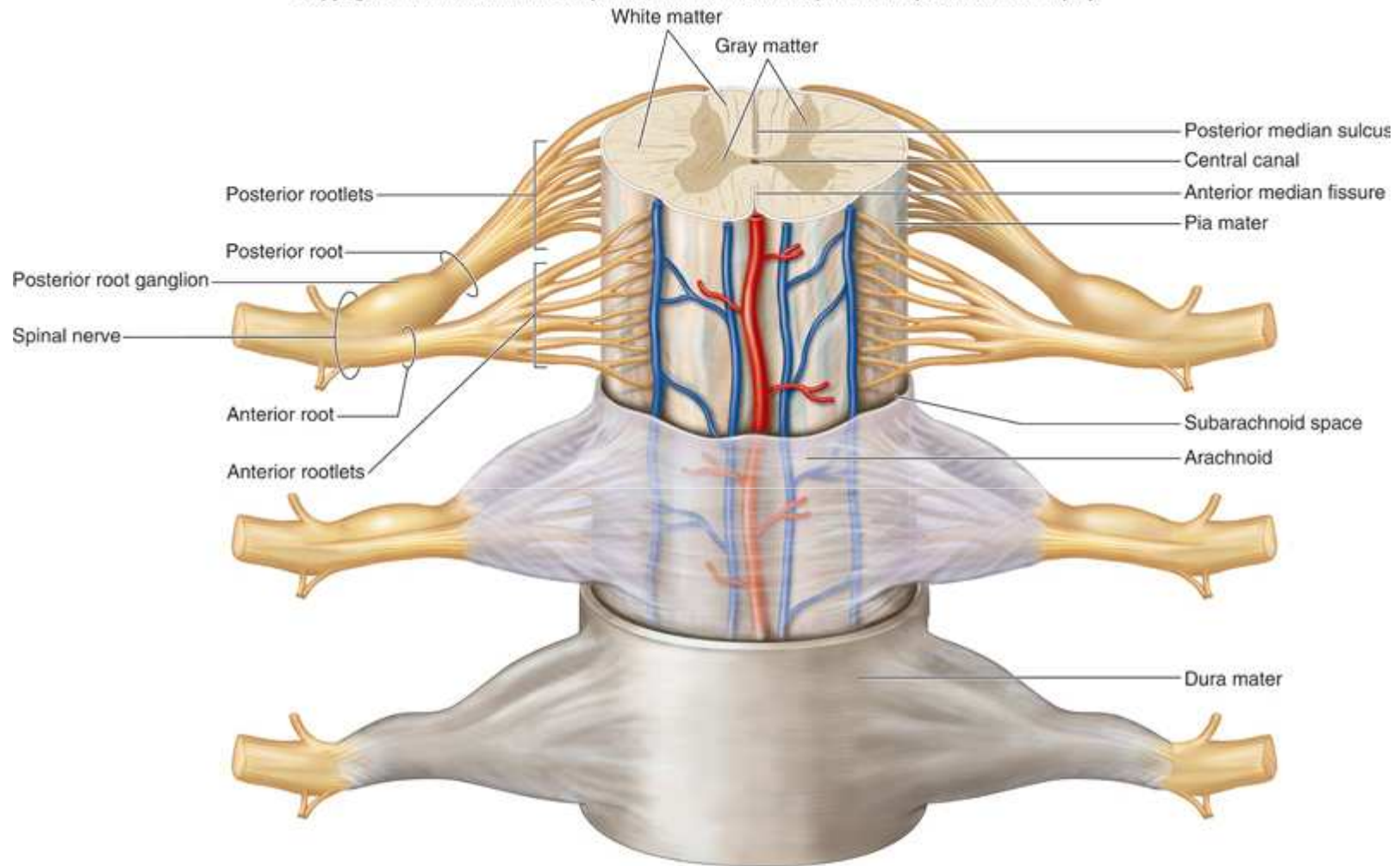


CT moelle épinière de Lapin

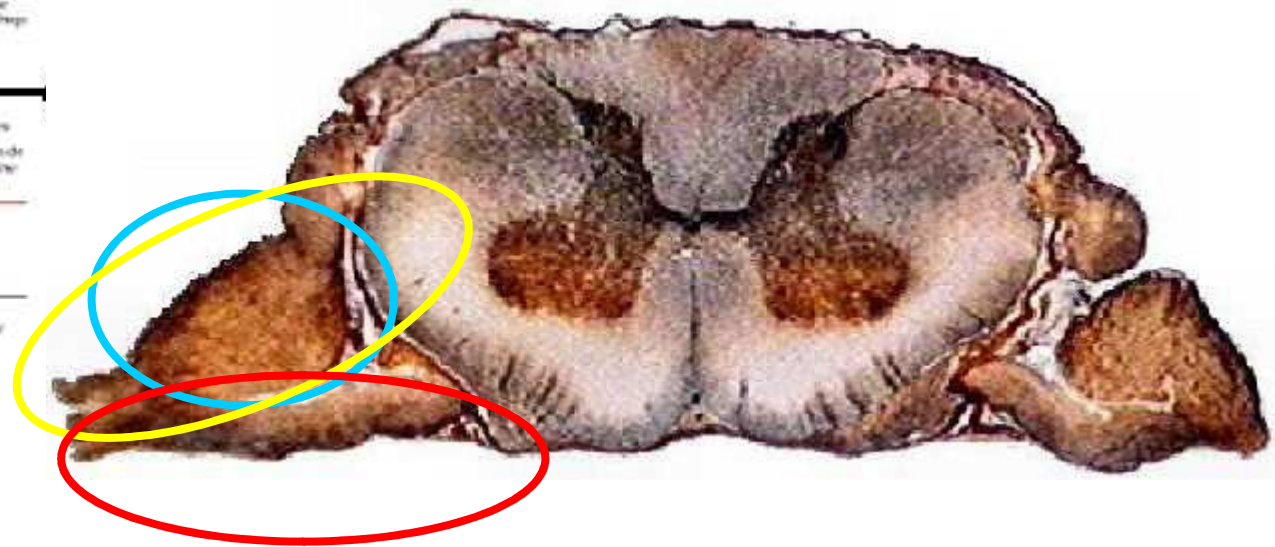
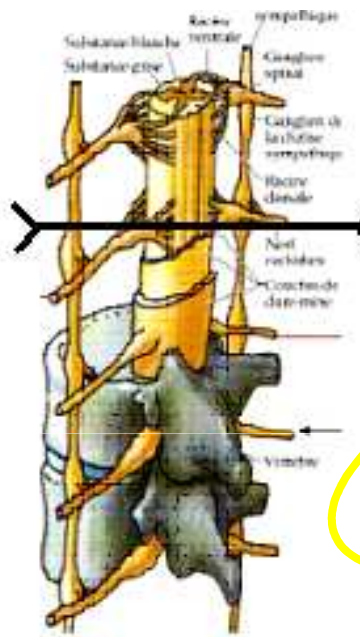
Hemalun - Eosine

Daniel Nardin - 11/05/2007

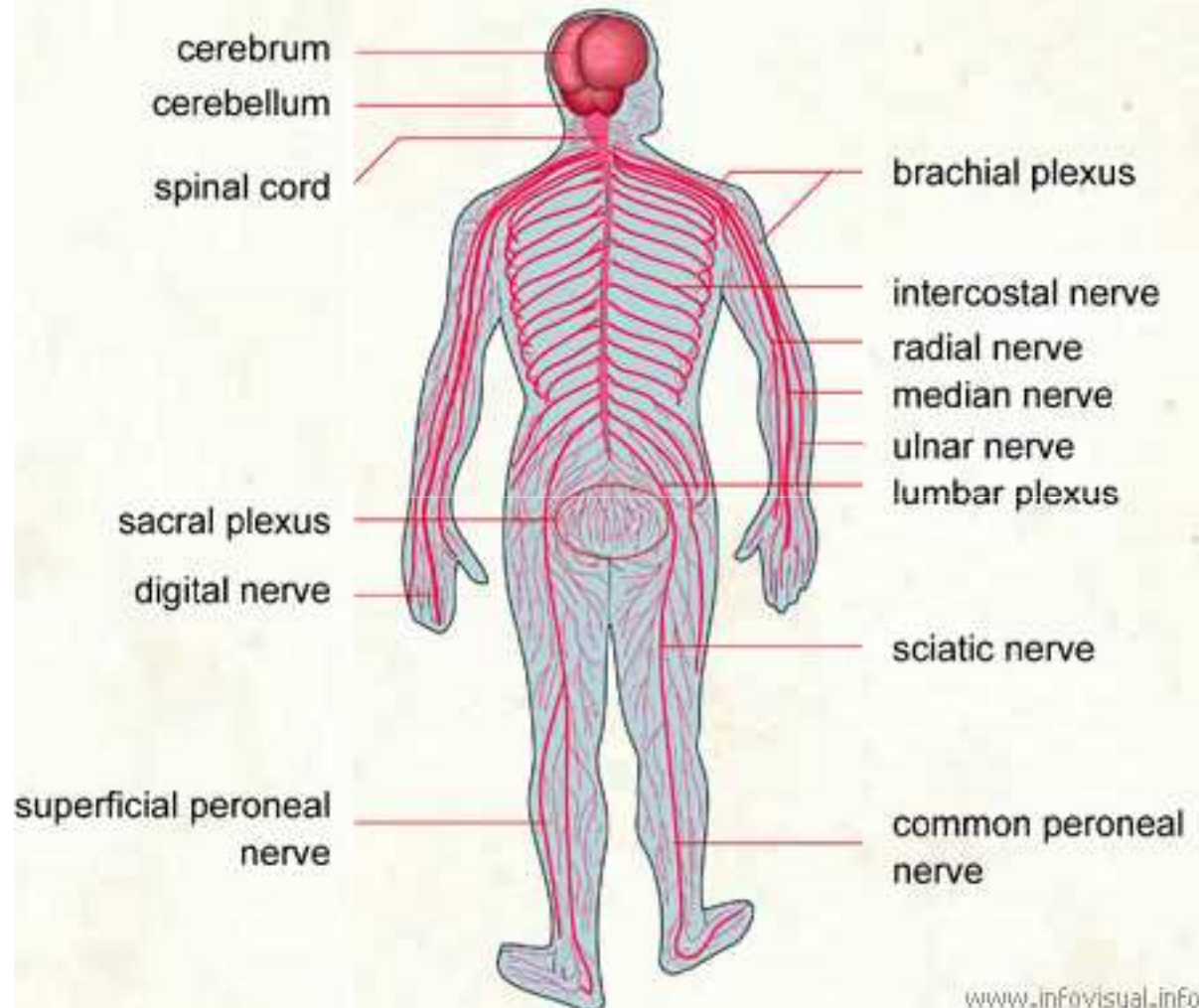
Copyright © The McGraw-Hill Companies, Inc. Permission required for reproduction or display.

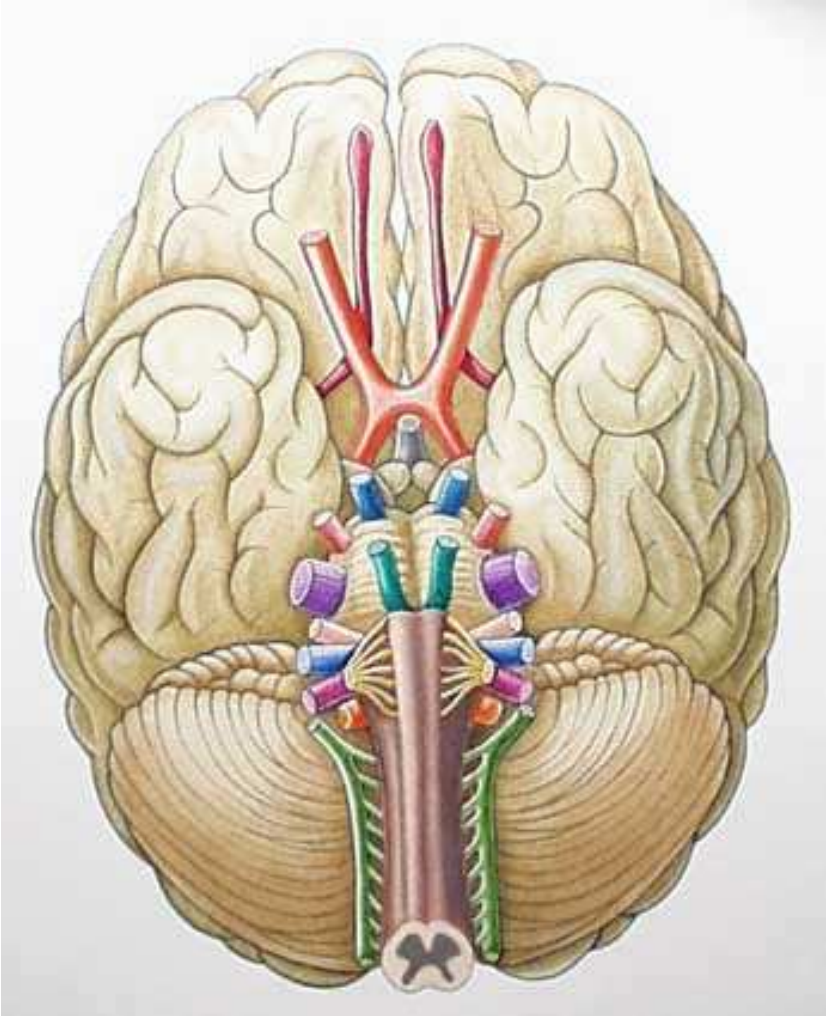


(b) Anterior view

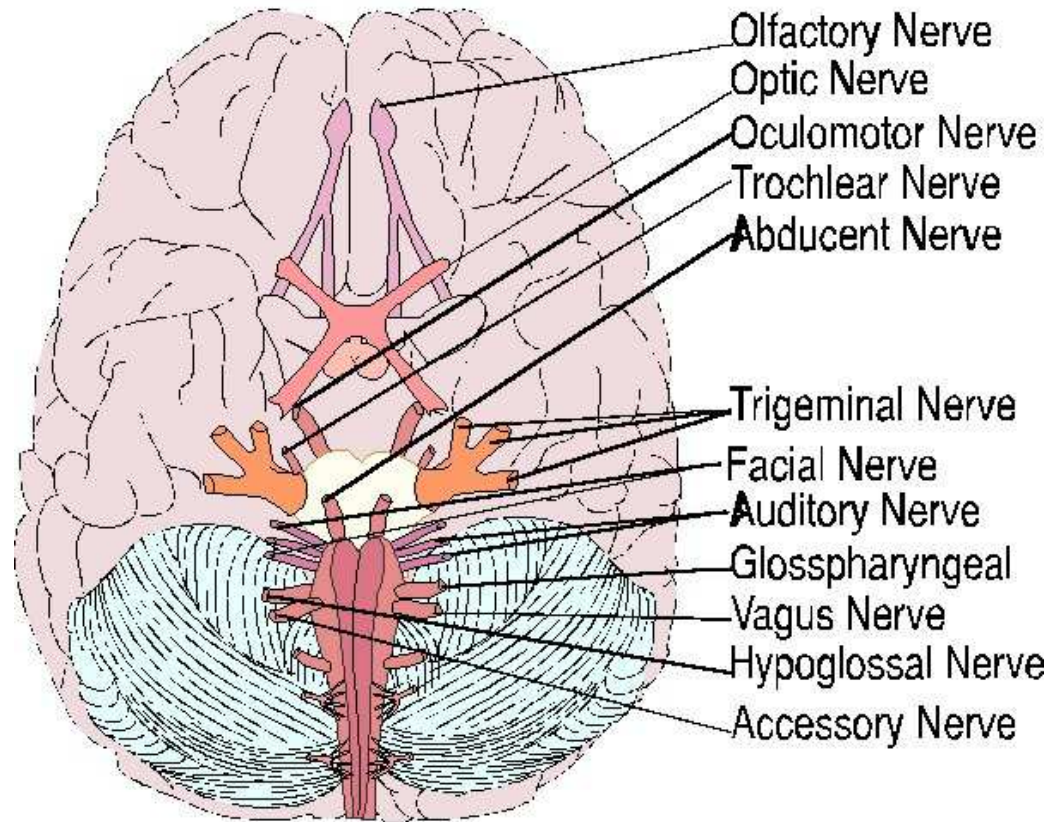


NERVOUS SYSTEM





The Cranial Nerves



Cranial Nerves

— Sensory
— Motor

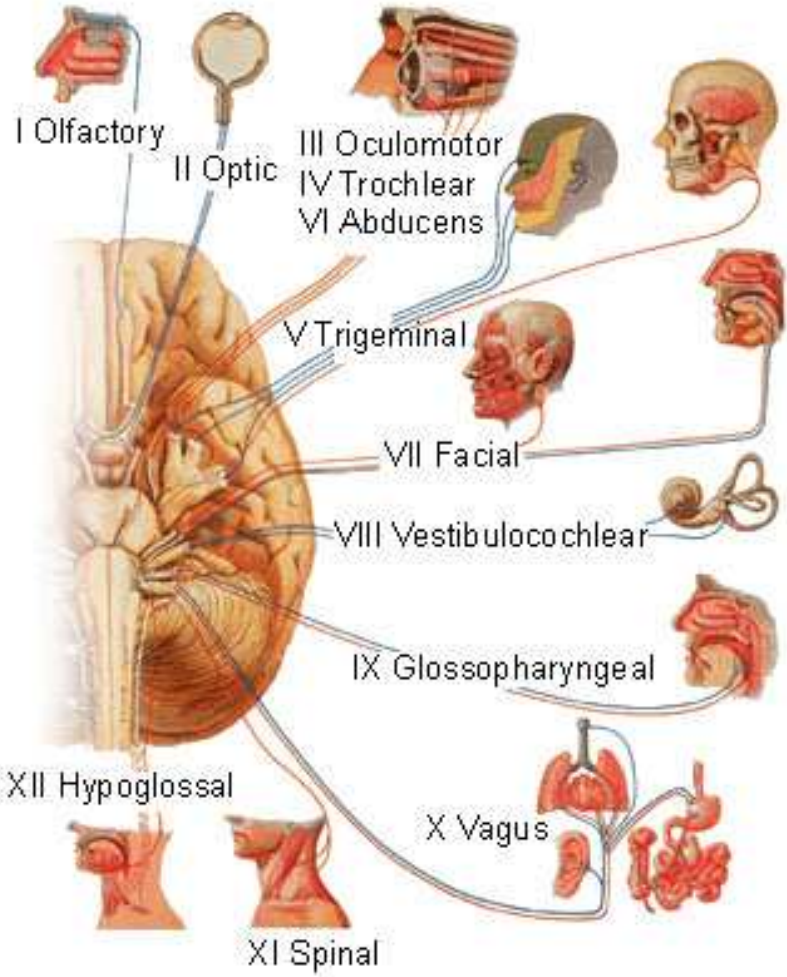
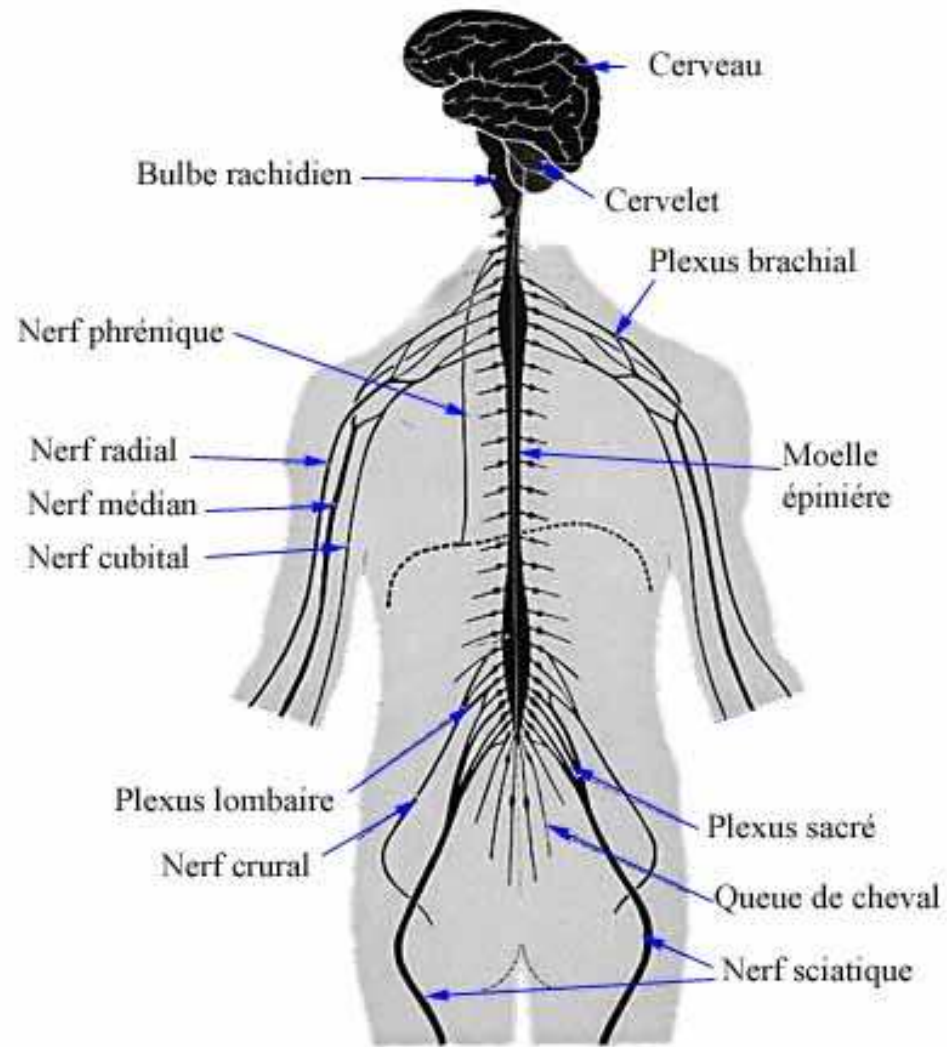
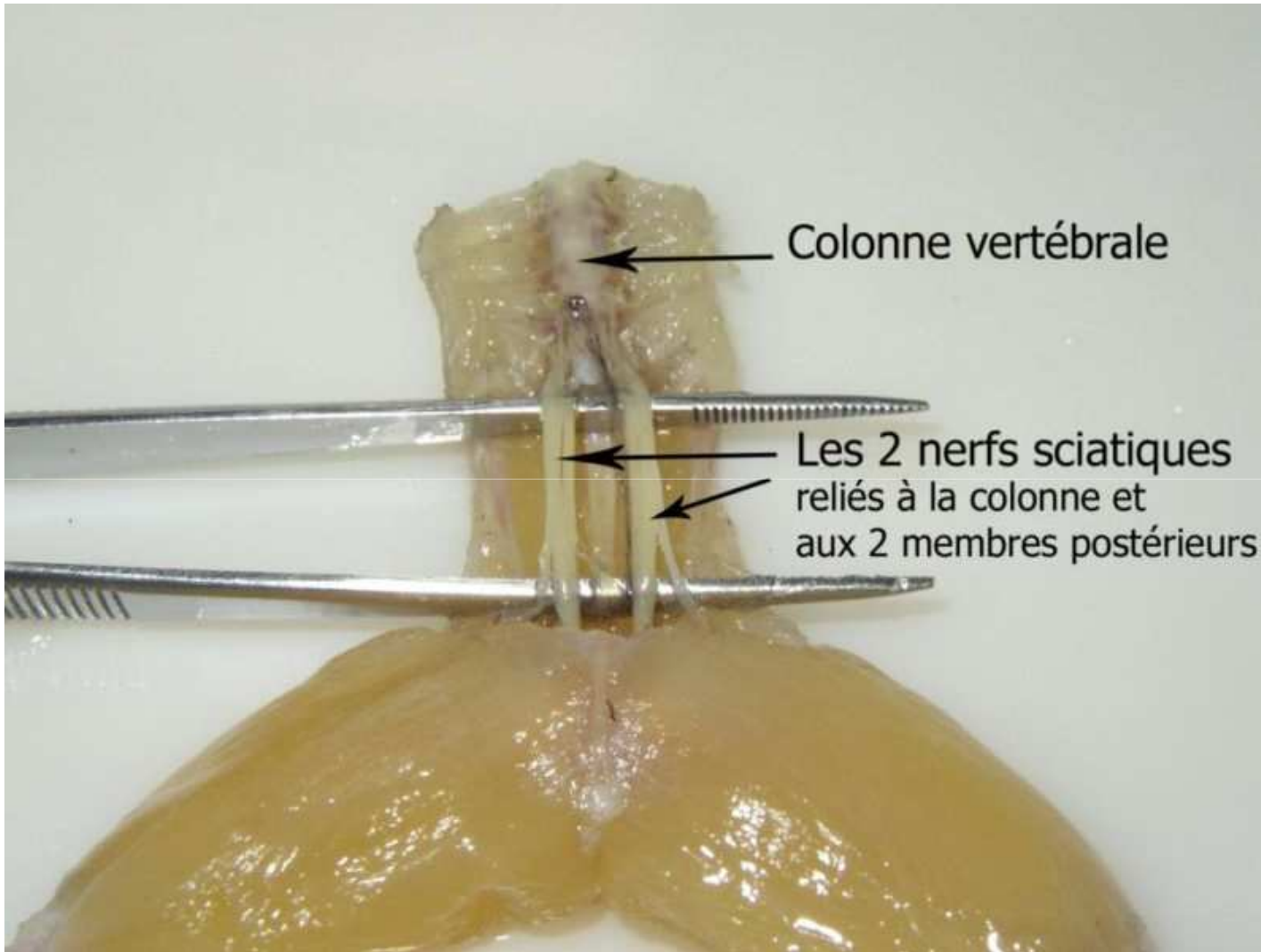
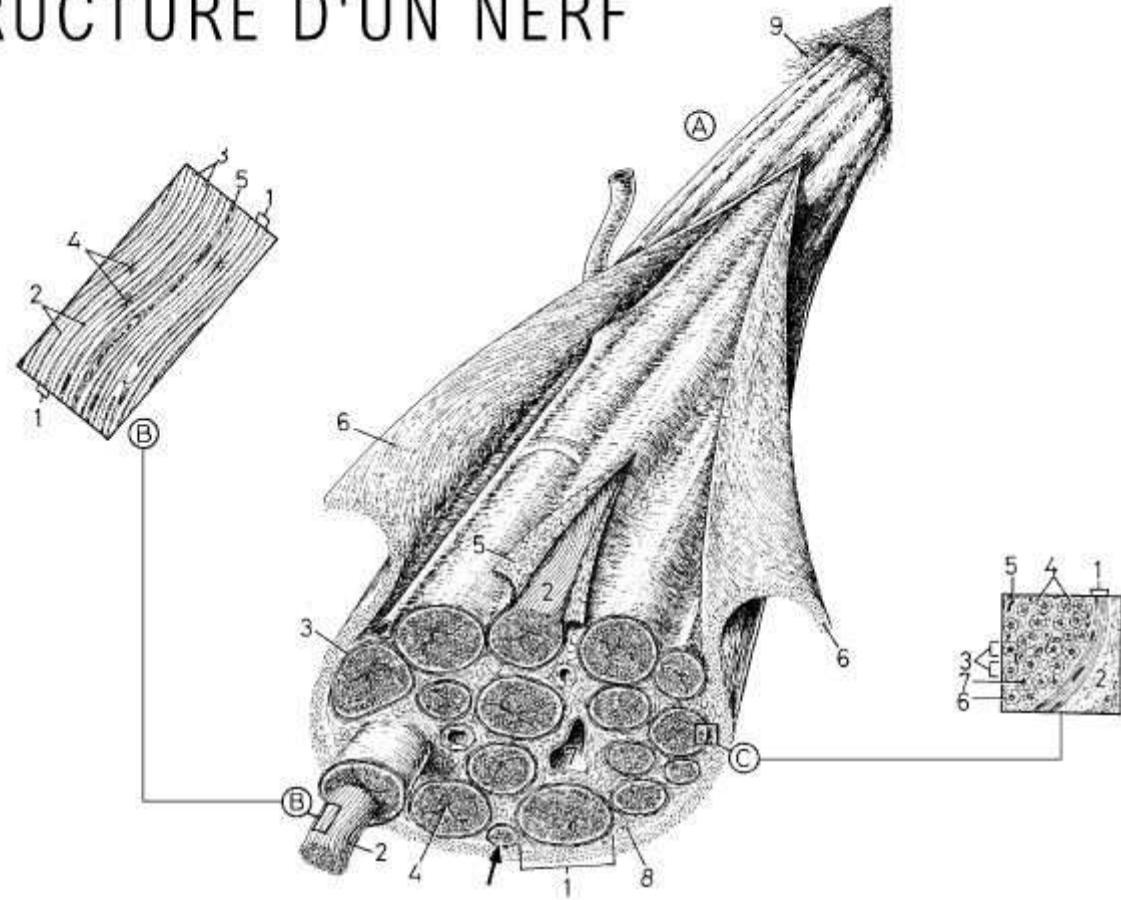


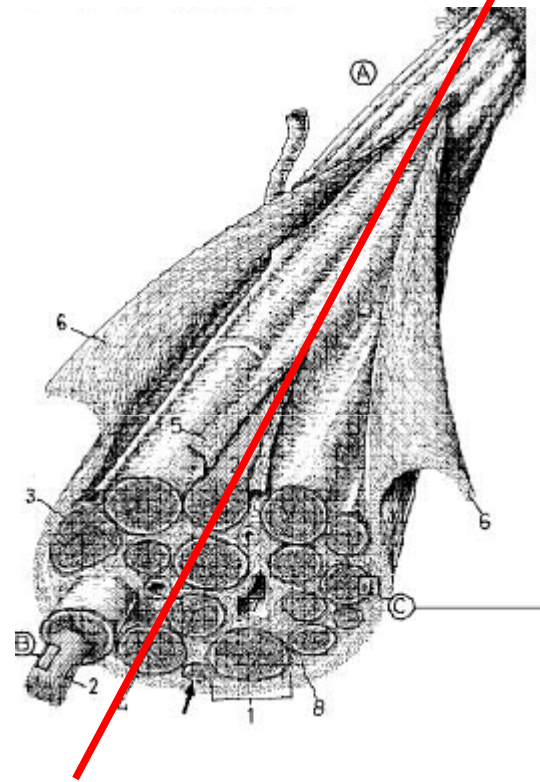
Schéma du système nerveux cérébro-spinal

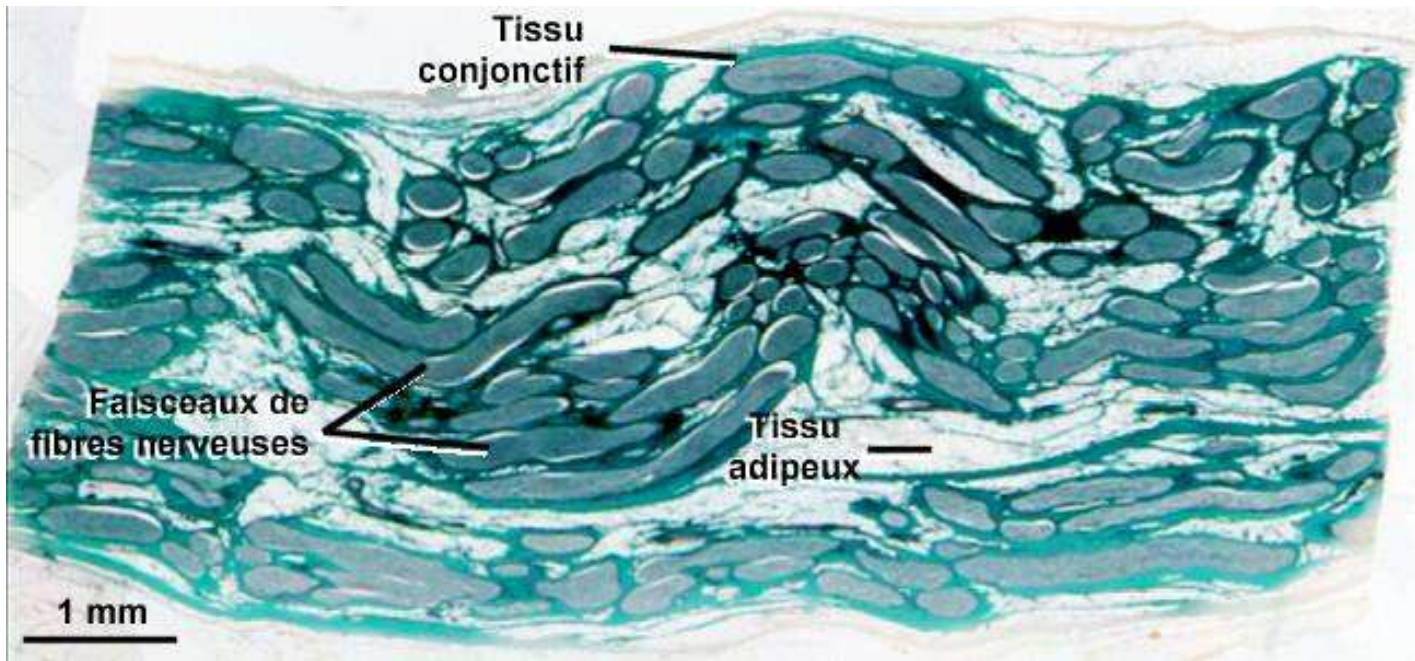


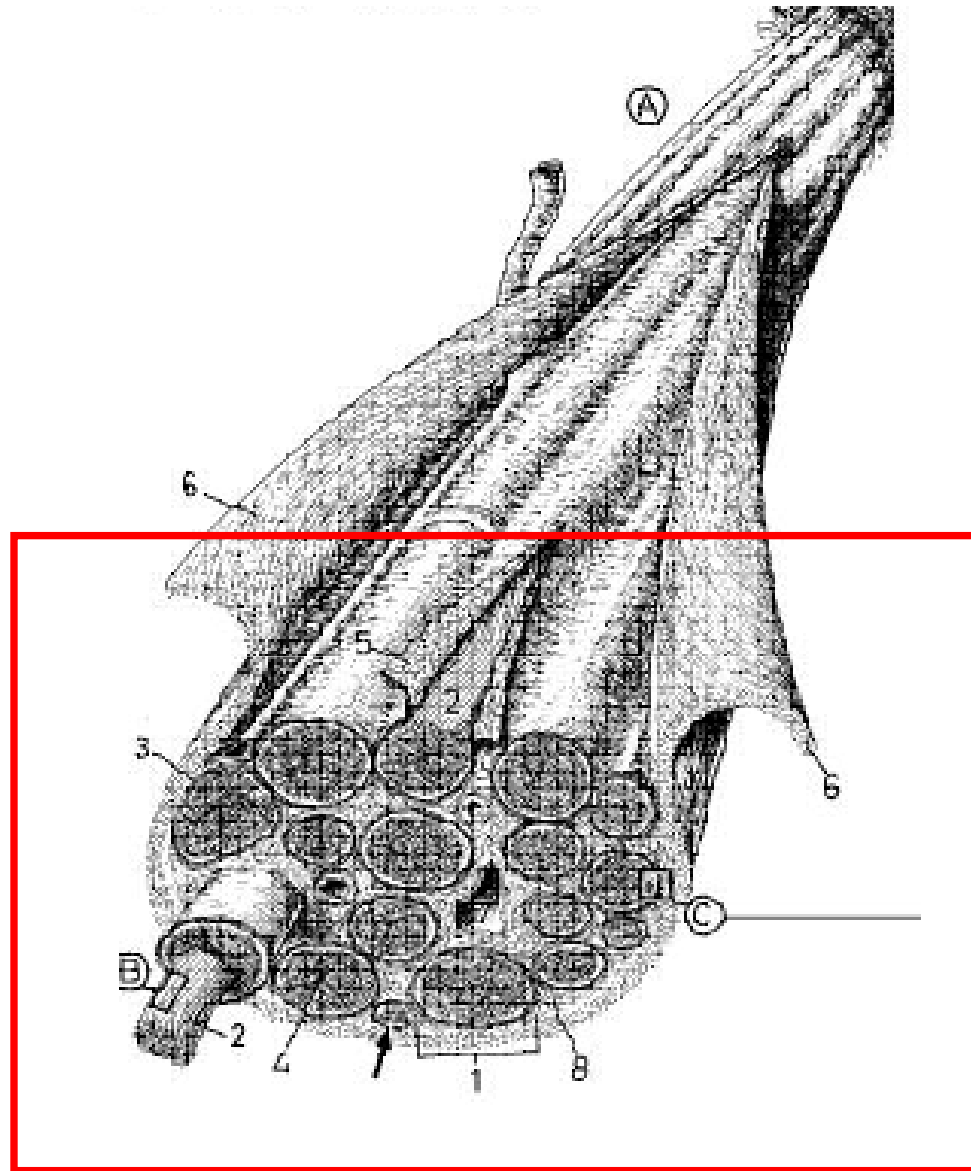


STRUCTURE D'UN NERF



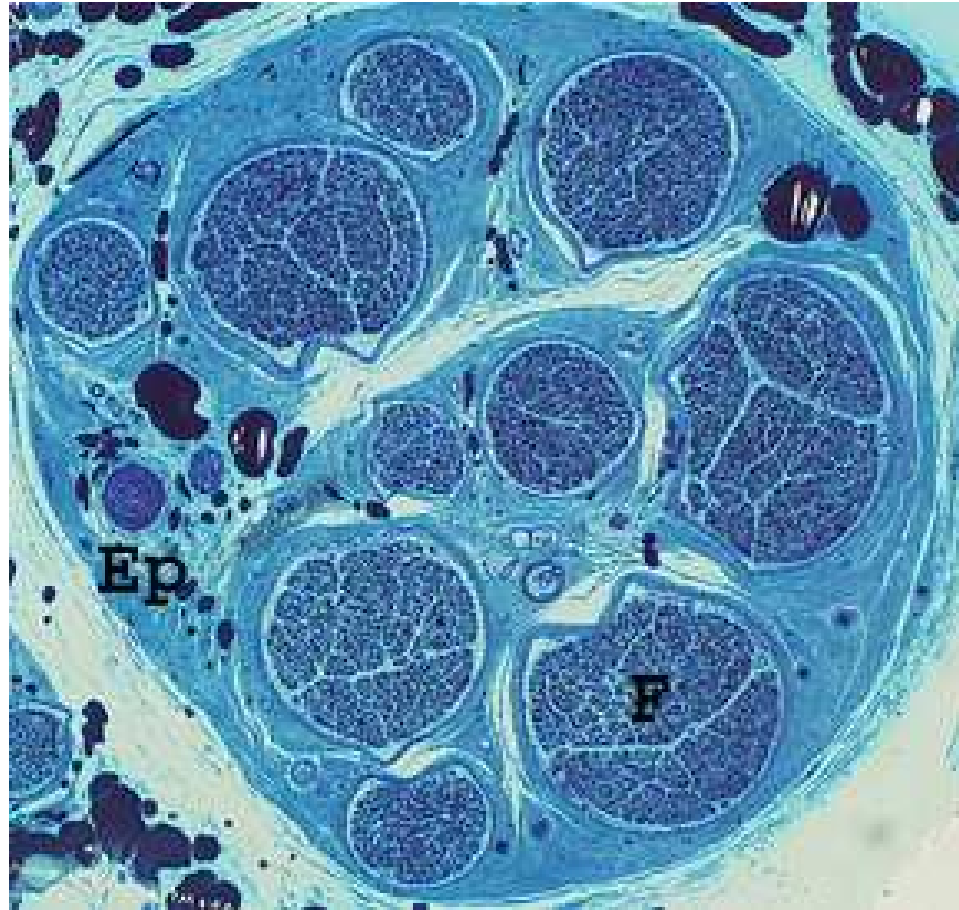


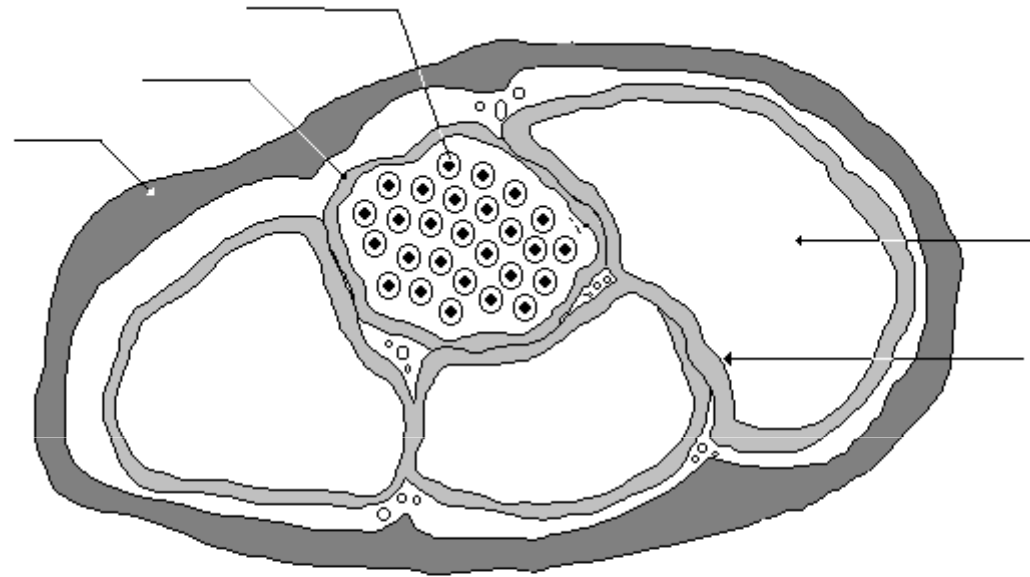




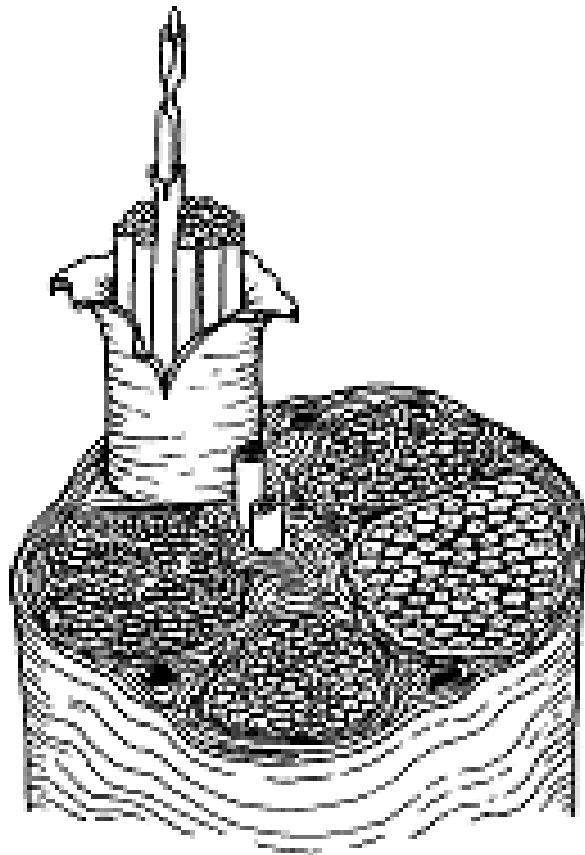






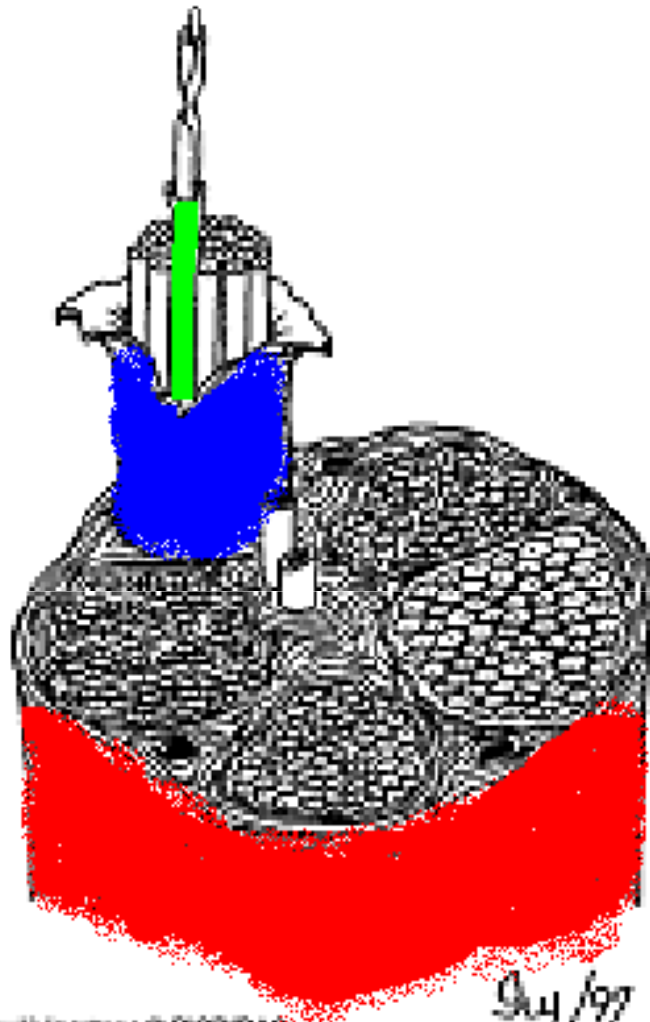


Coupe de Nerf périphérique - 2.4.1.



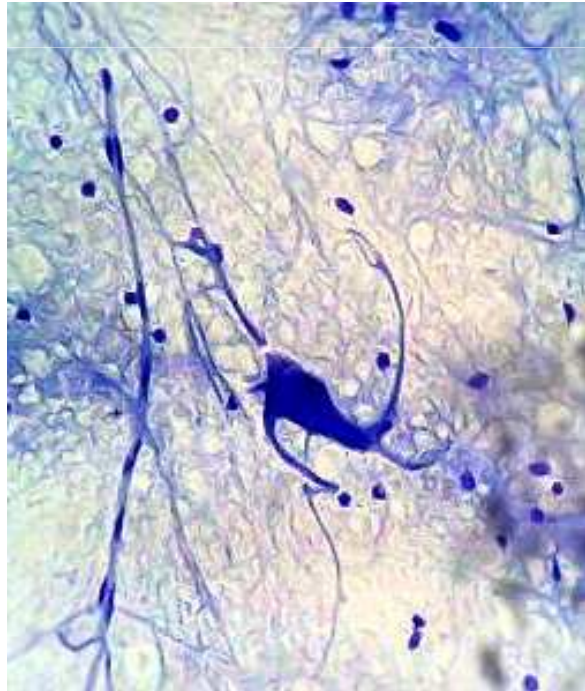
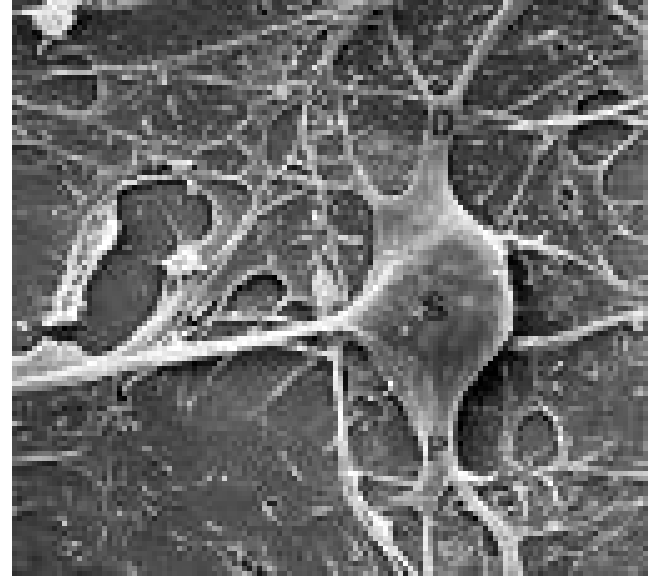
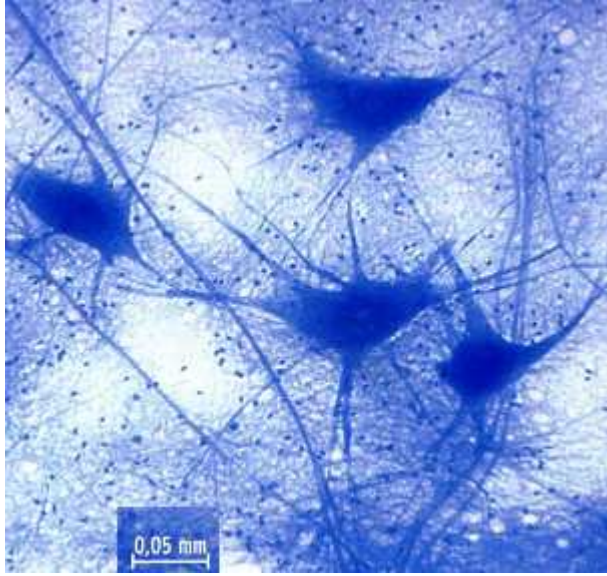
by IFAngstone © BIODIAC

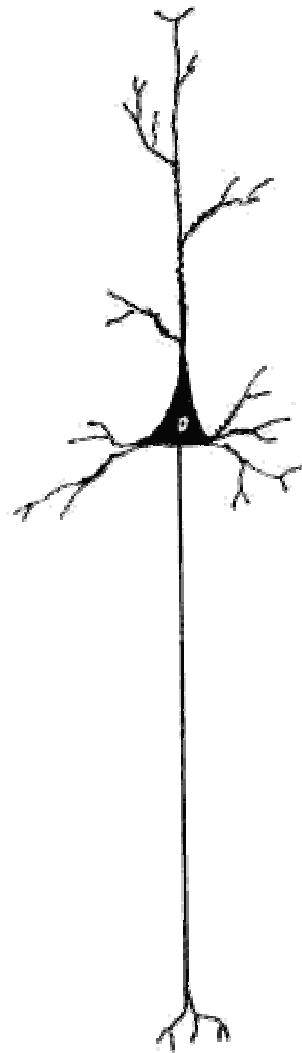
9/4/97



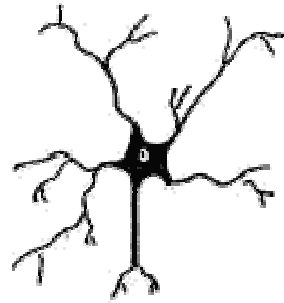
by IFAngstone © BIODIAC

9/4/97





pyramidal



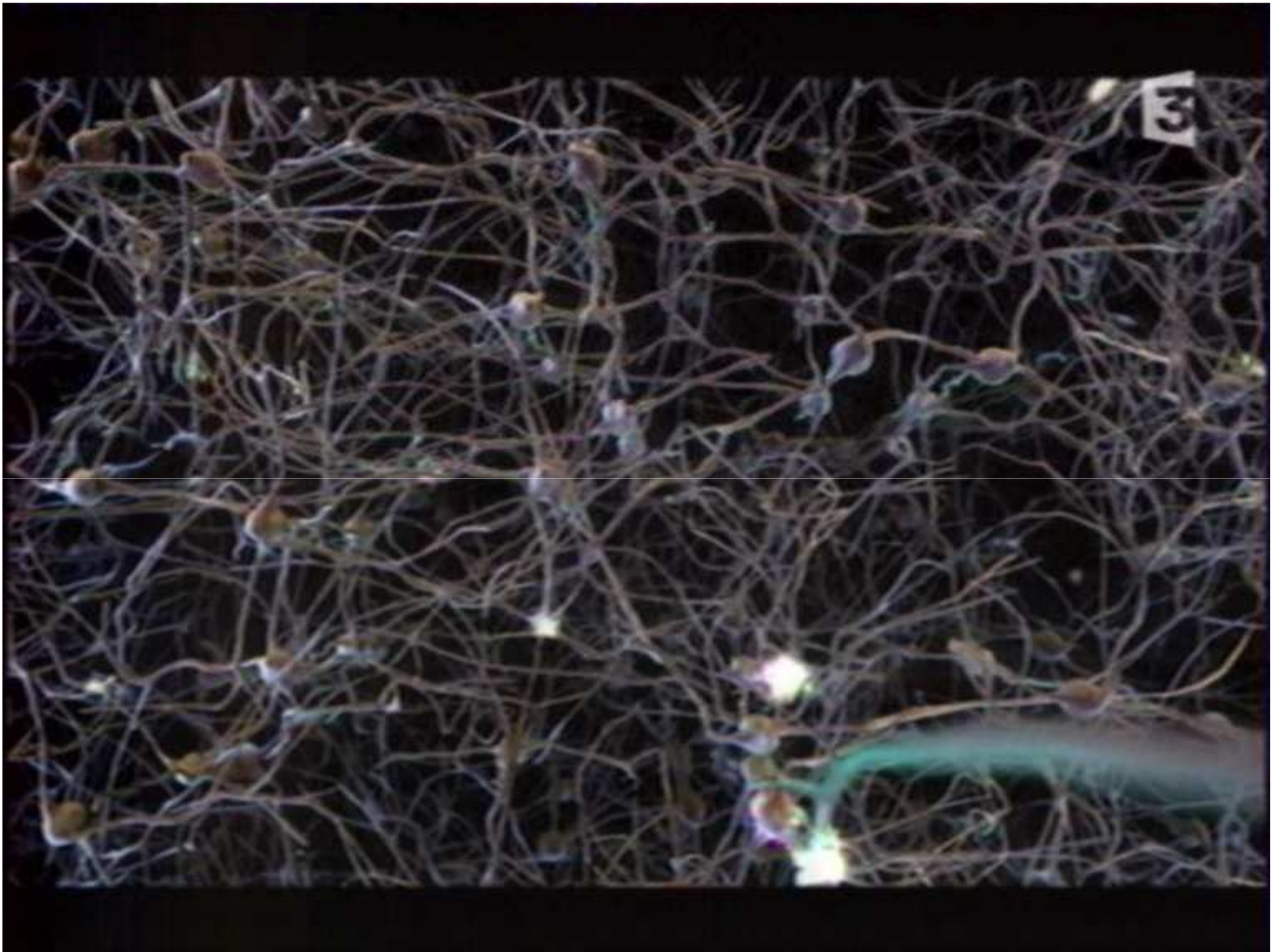
multipolaire

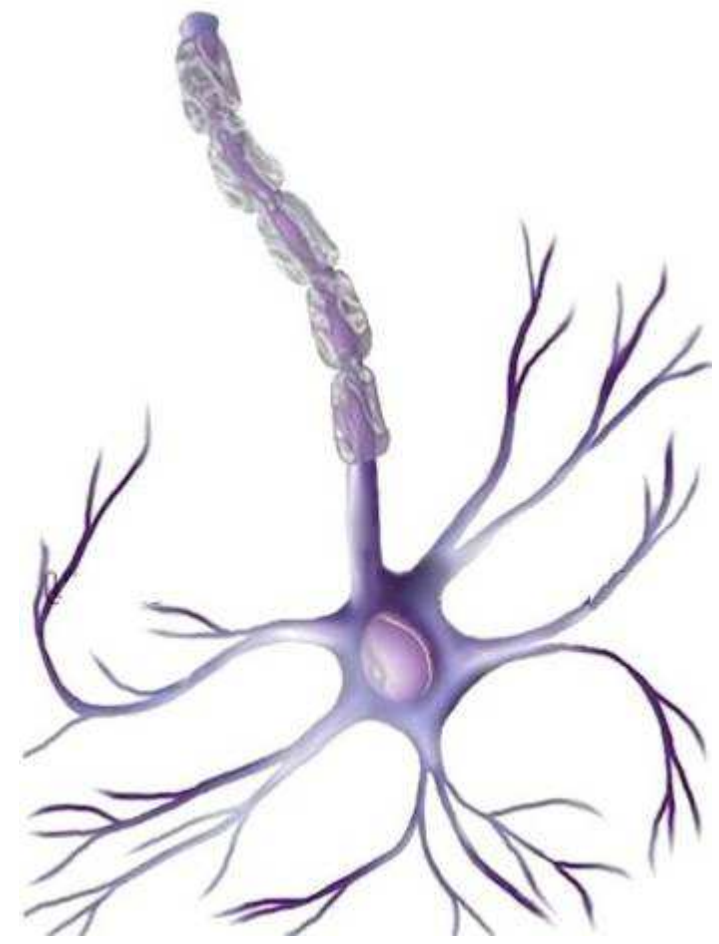
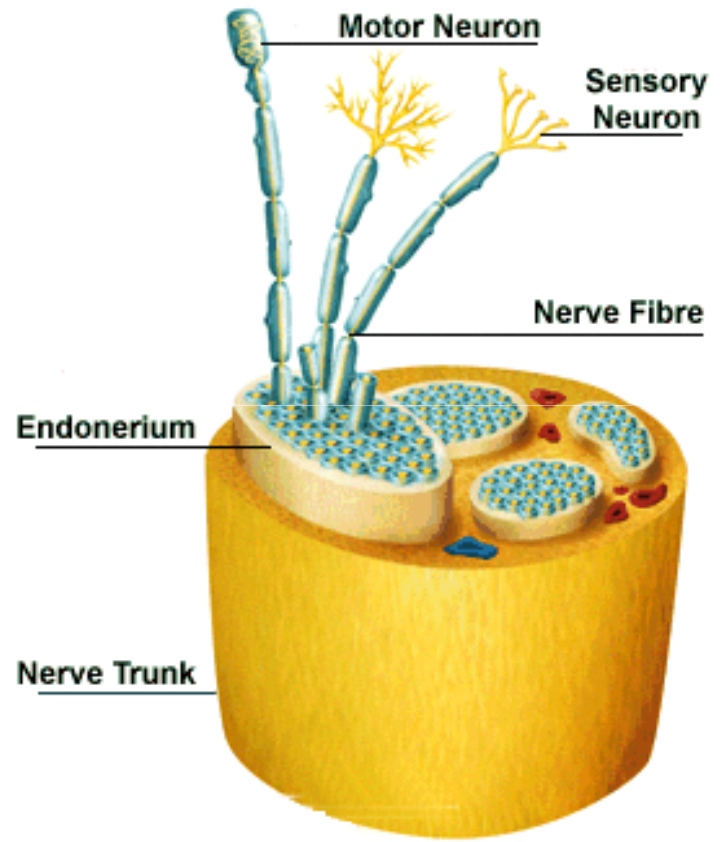


pseudounipolaire

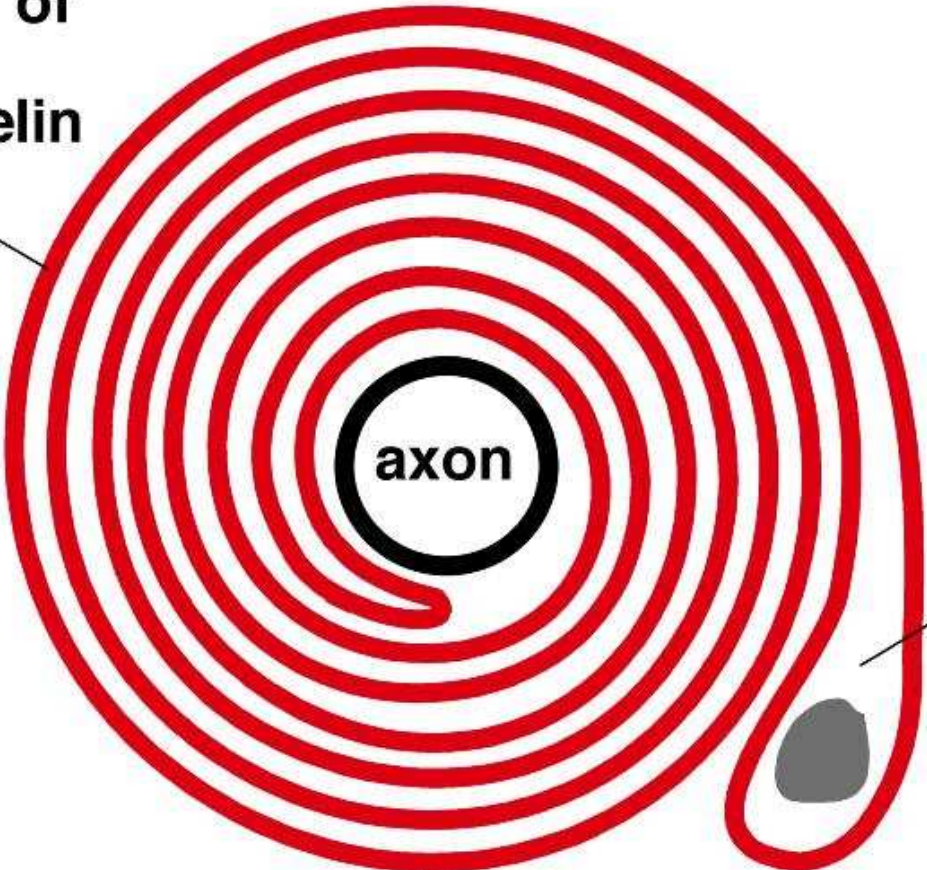


bipolaire

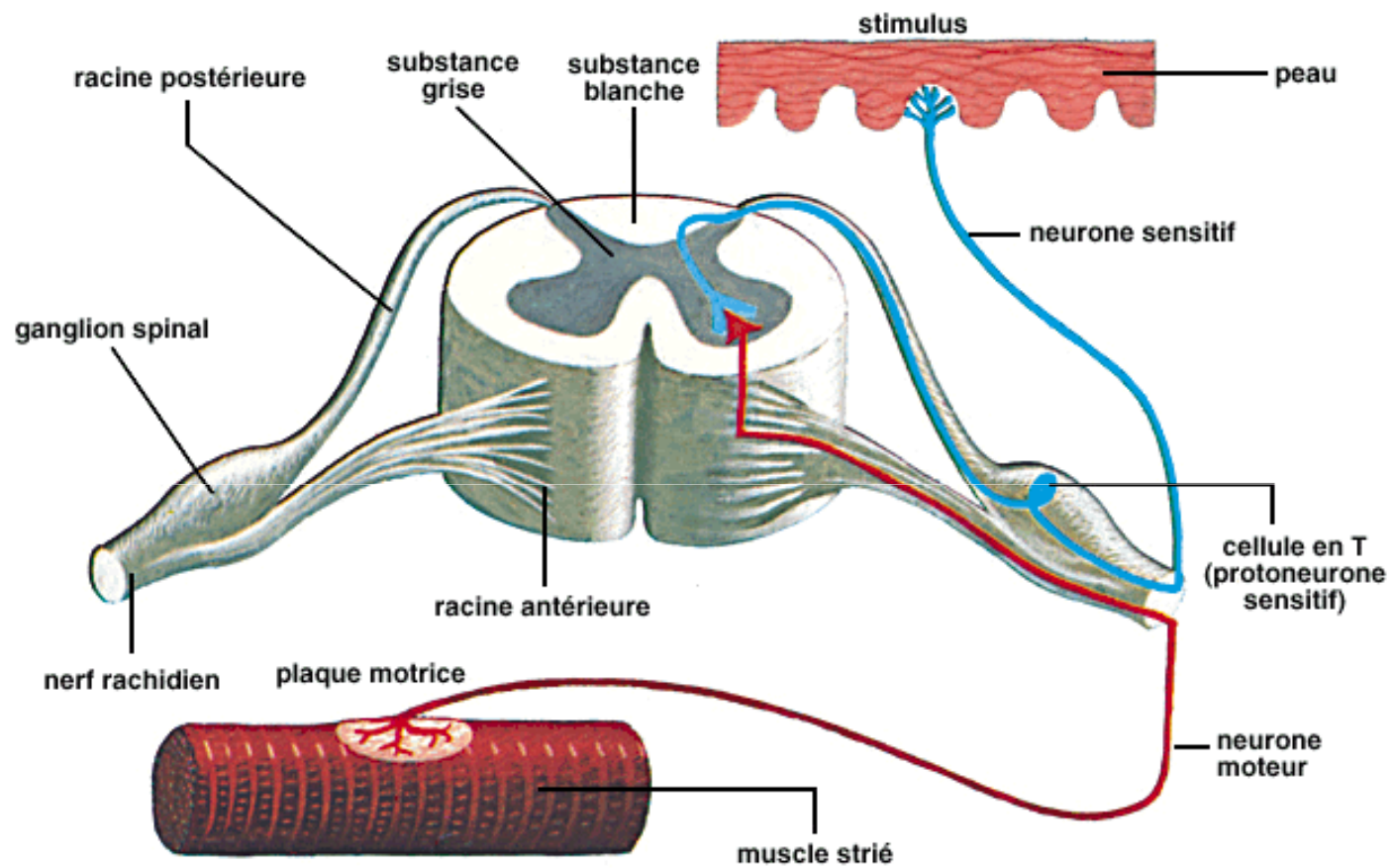


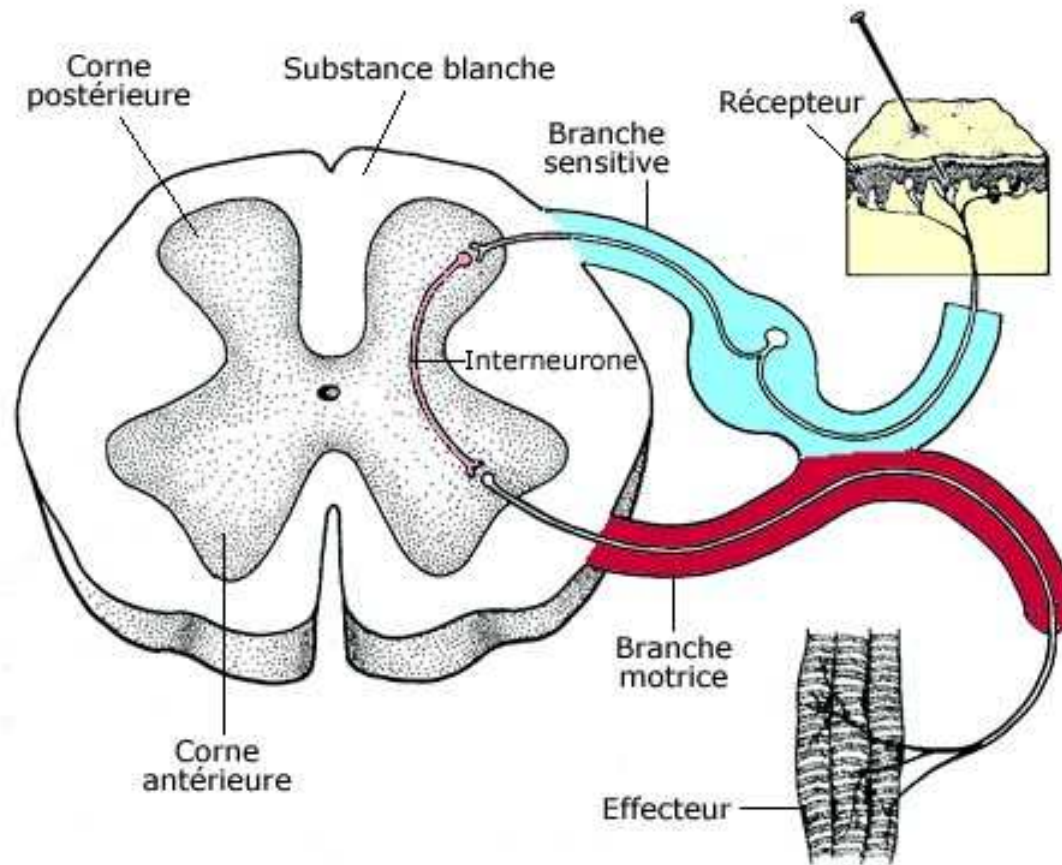


cell membrane of Schwann cell containing myelin



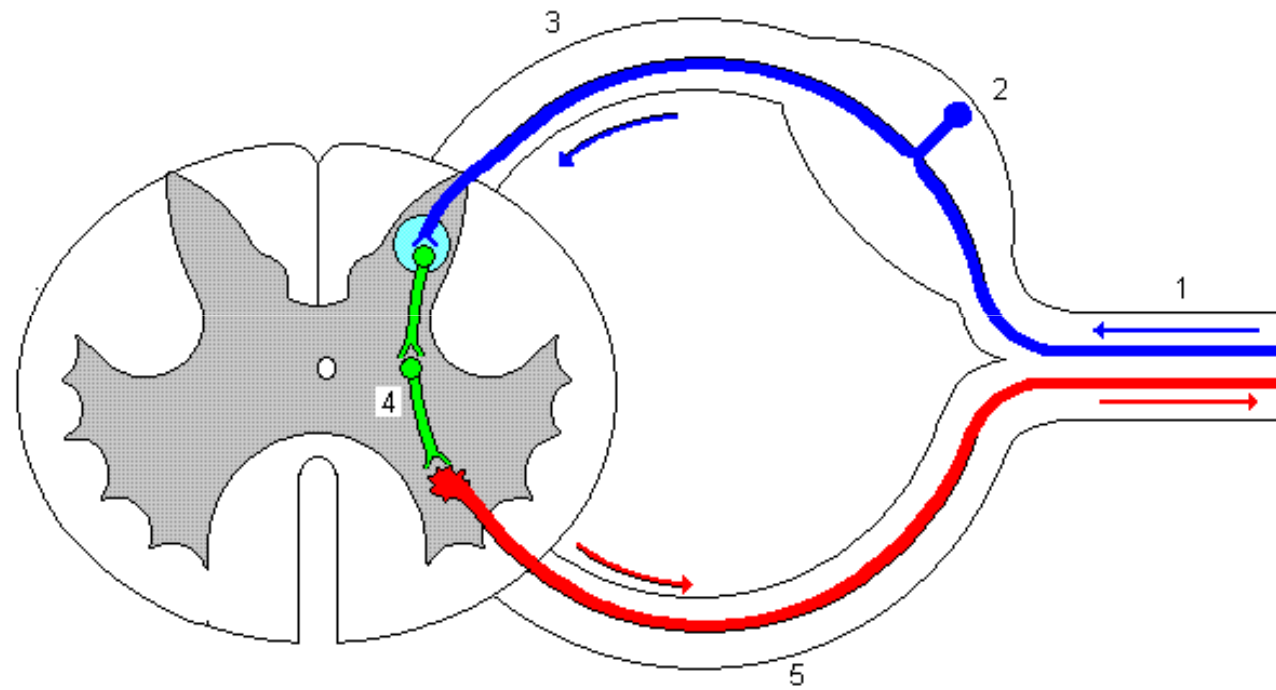
Schwann cell





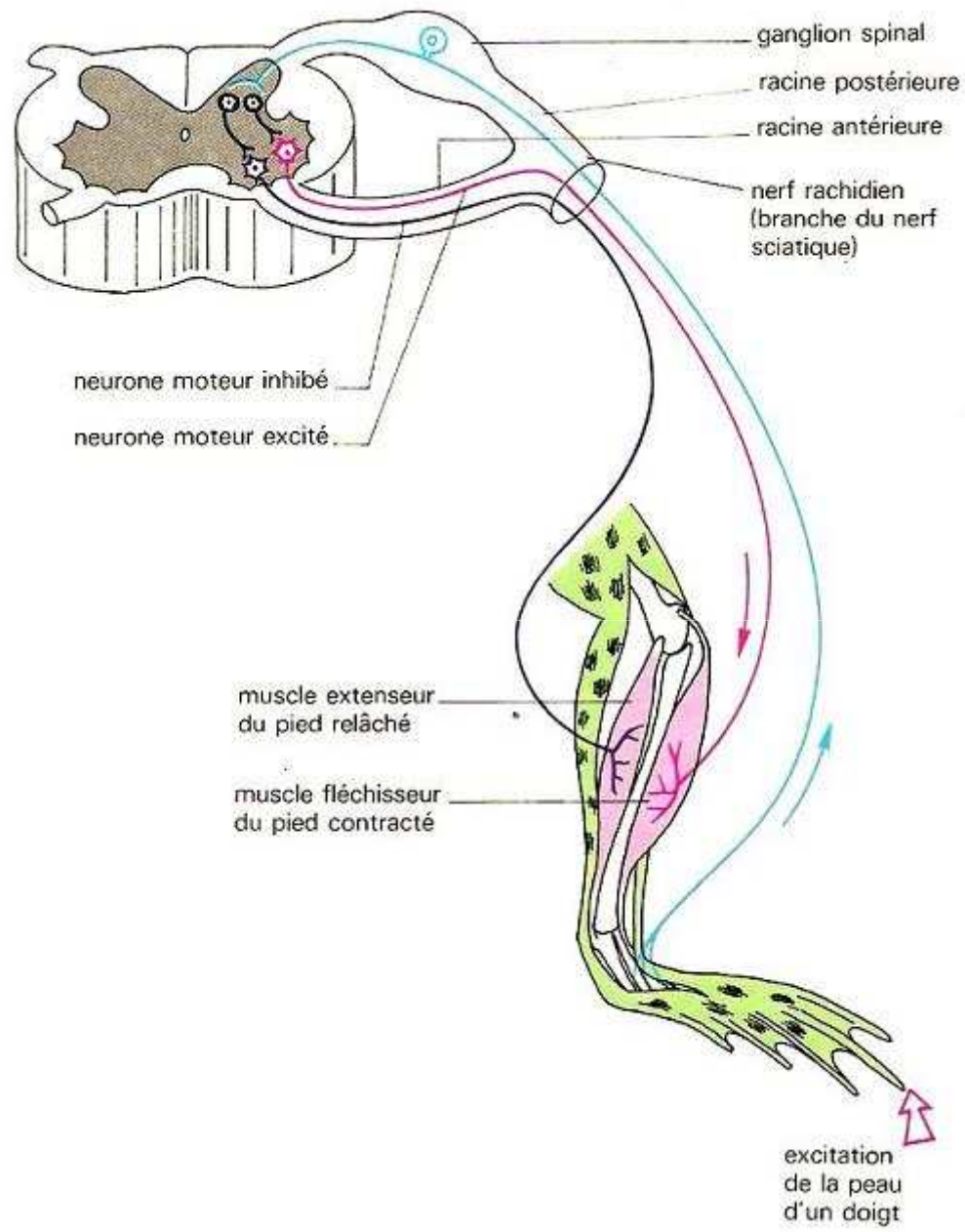
[S.55]

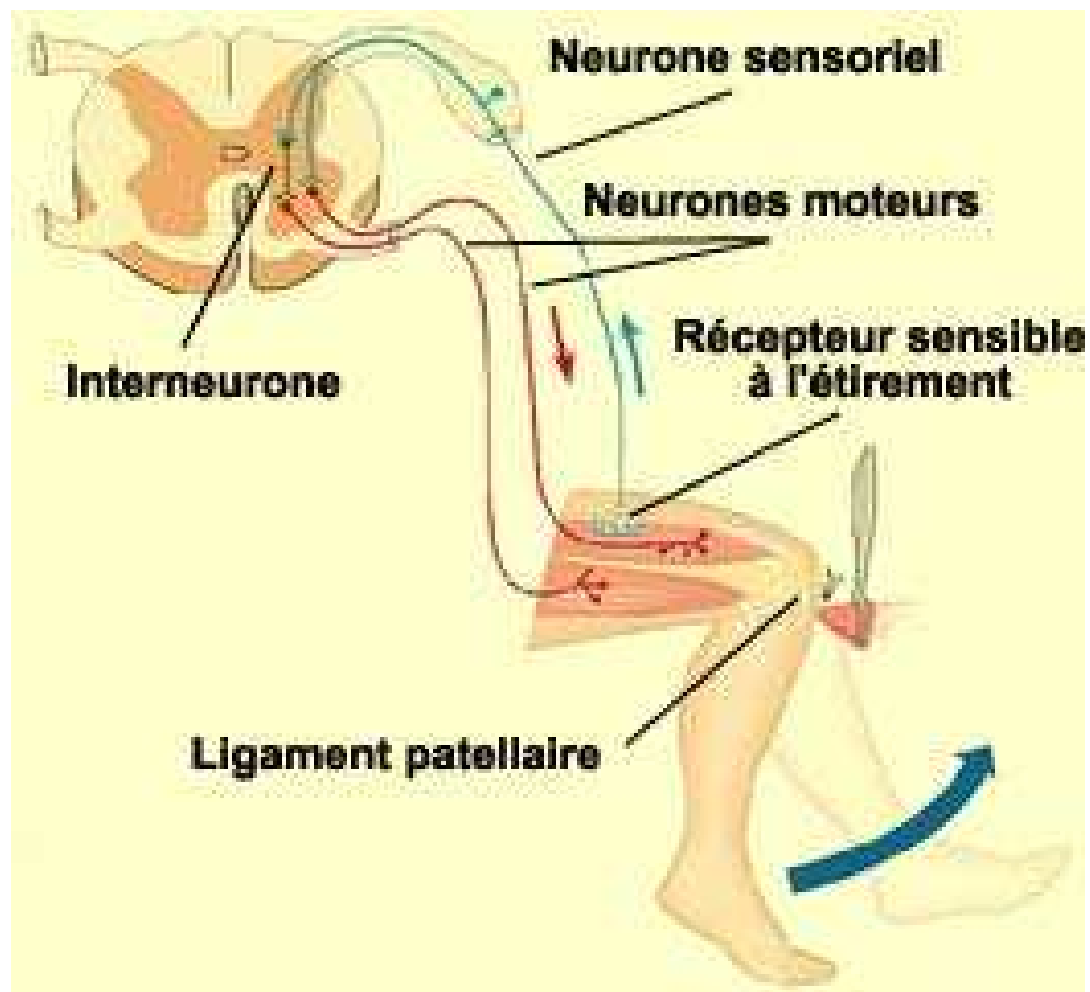
Arc réflexe de niveau médullaire segmentaire

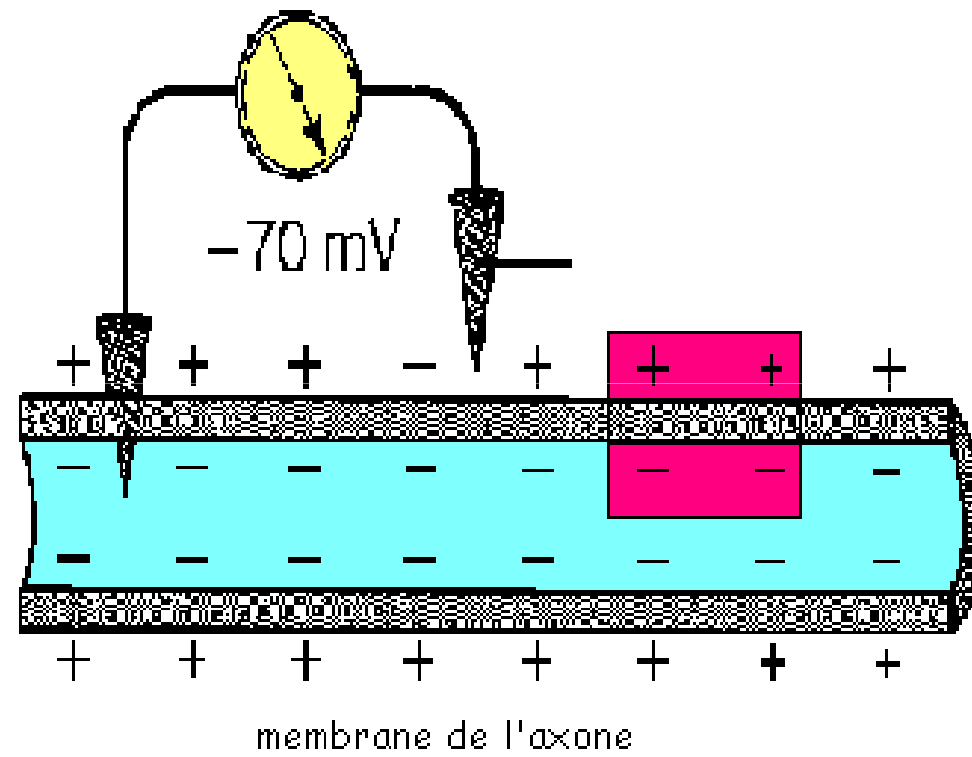


1 - Nerf Spinal (ou rachidien) - Nerf mixte 2 - Ganglion spinal 3 - Racine dorsale (sensitive)

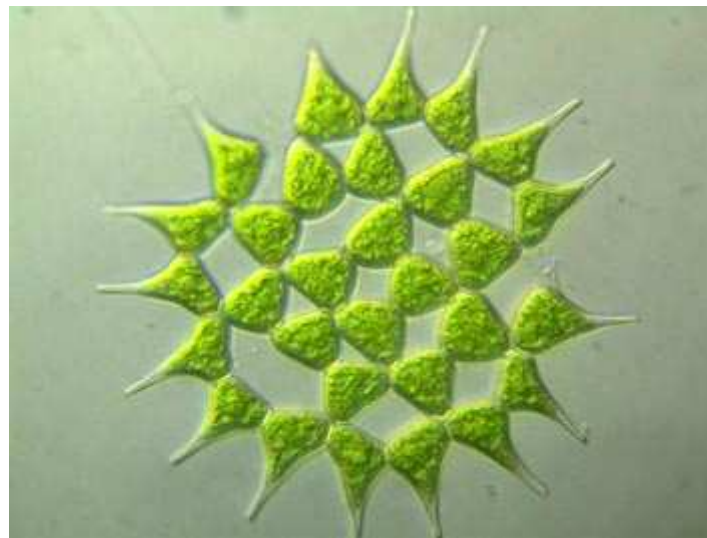
4 - Inter - neurones (un ou plusieurs) 5 - racine ventrale (motrice)

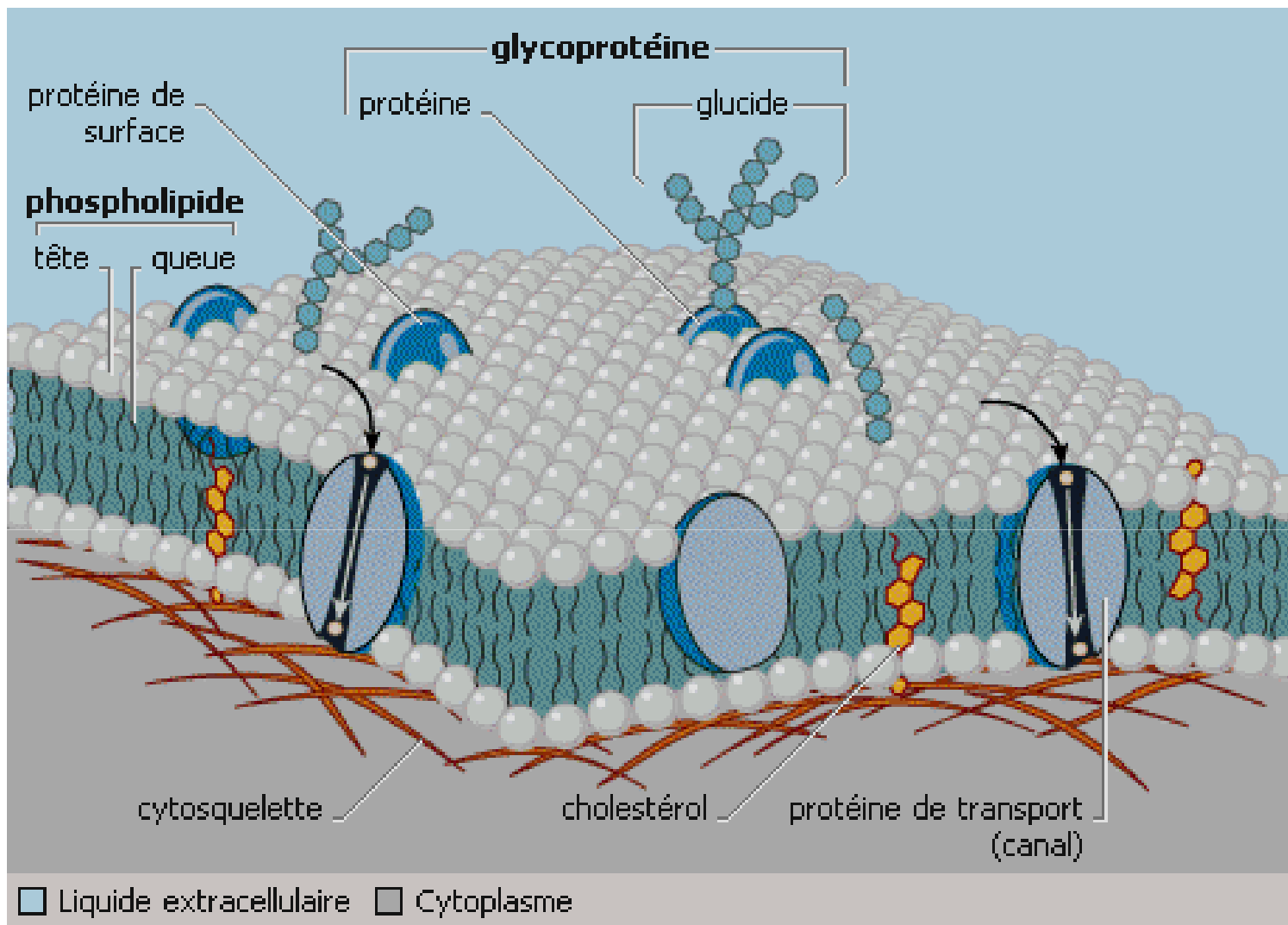






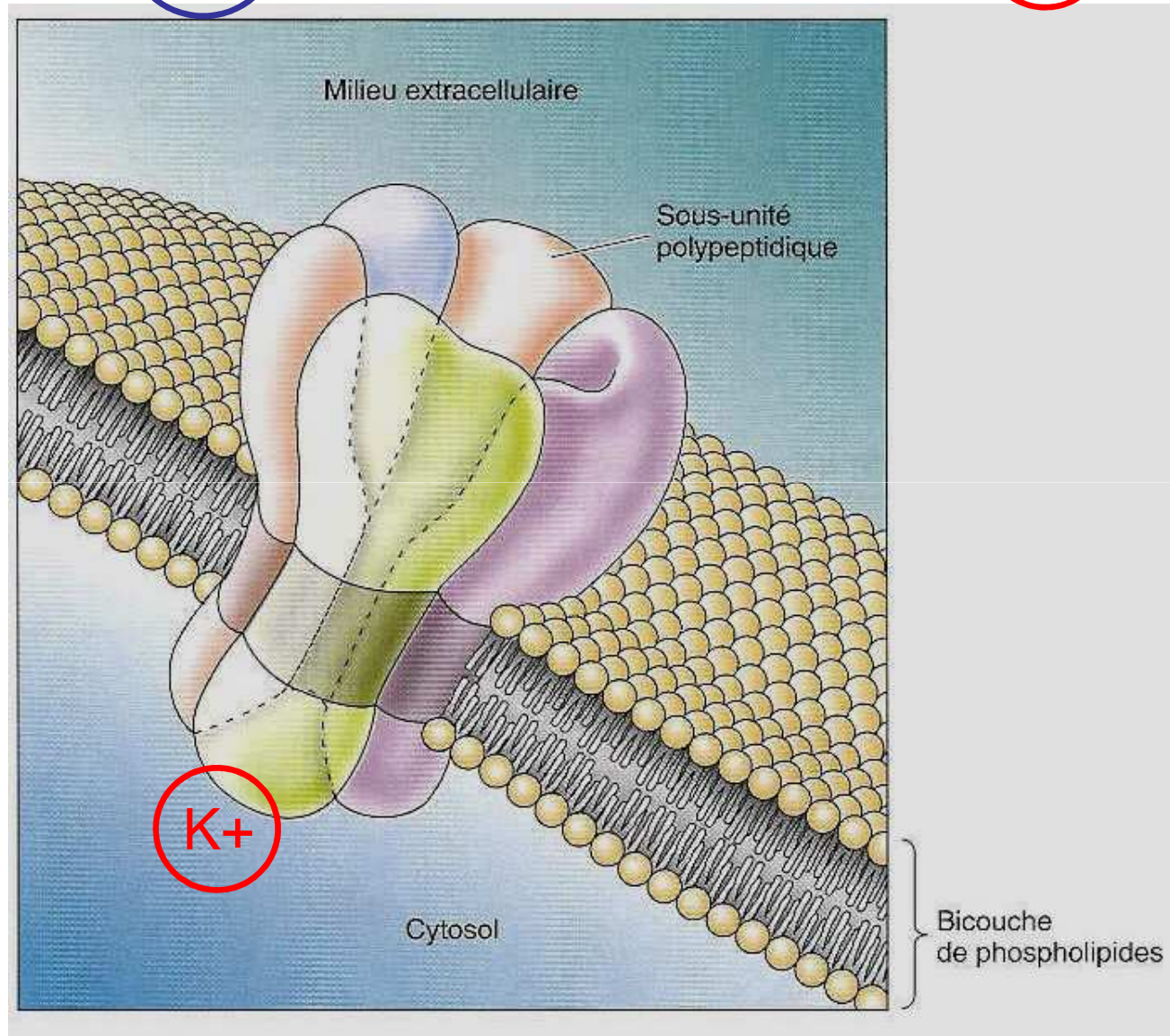
Sorte de cellule	Ddp (en mV)
Cellules de la rétine	-20
Cellules musculaires	-90
Cellules β du pancréas	-70
Cellules d'une algue <i>Chora australis</i>	-150
Neurone	-70

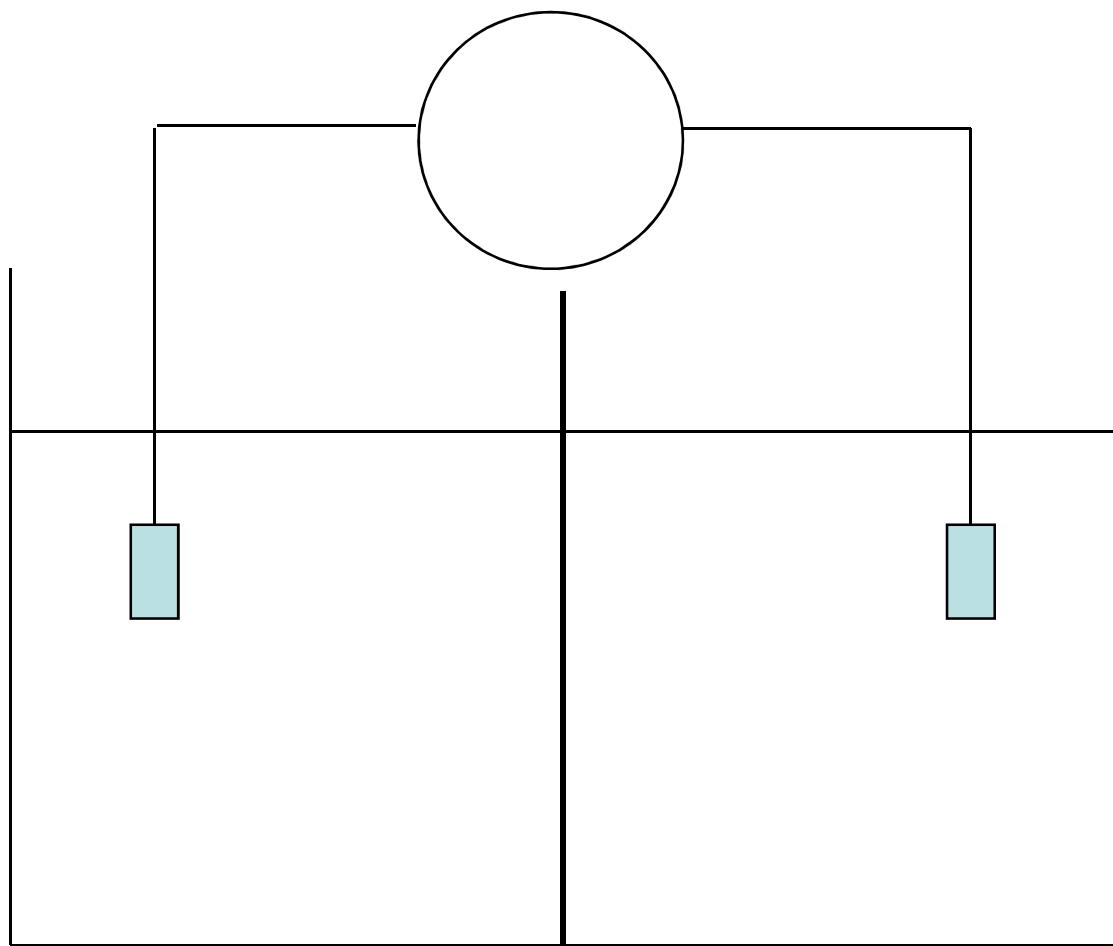


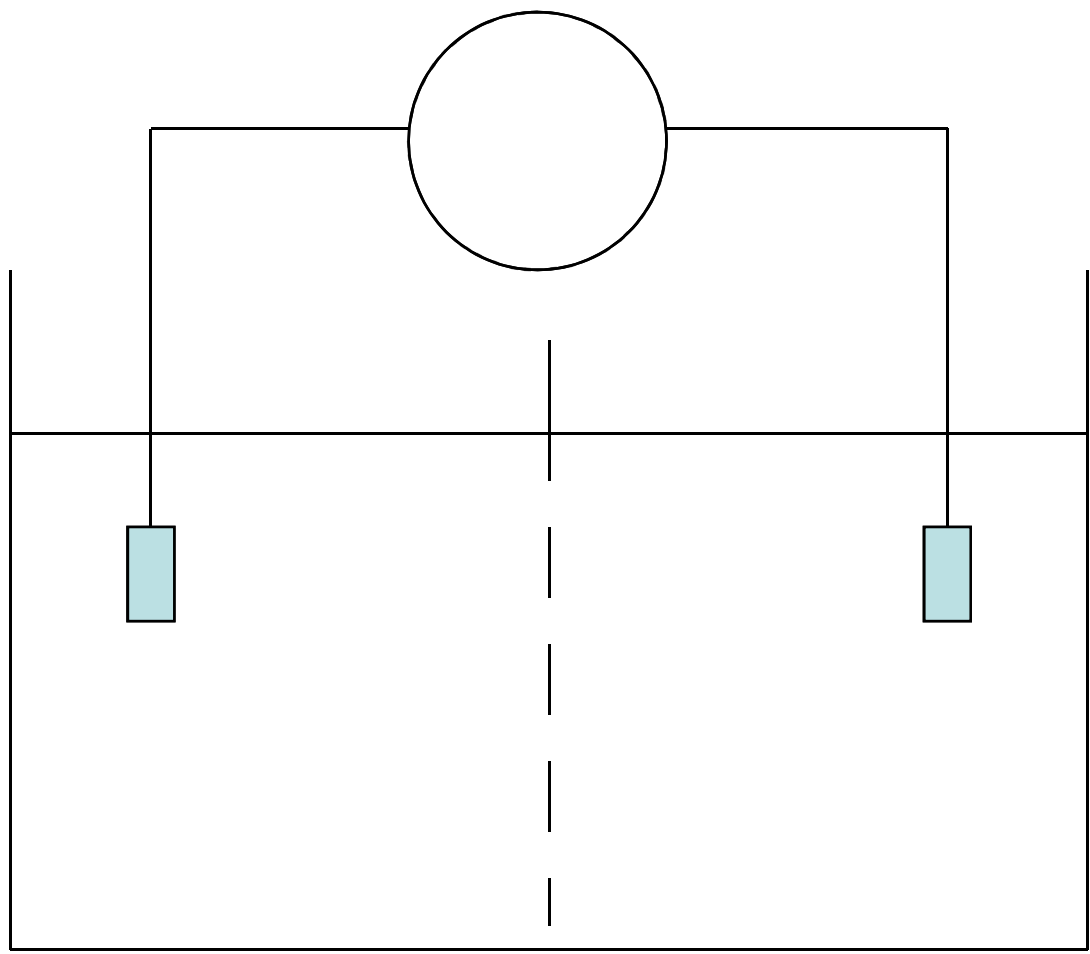


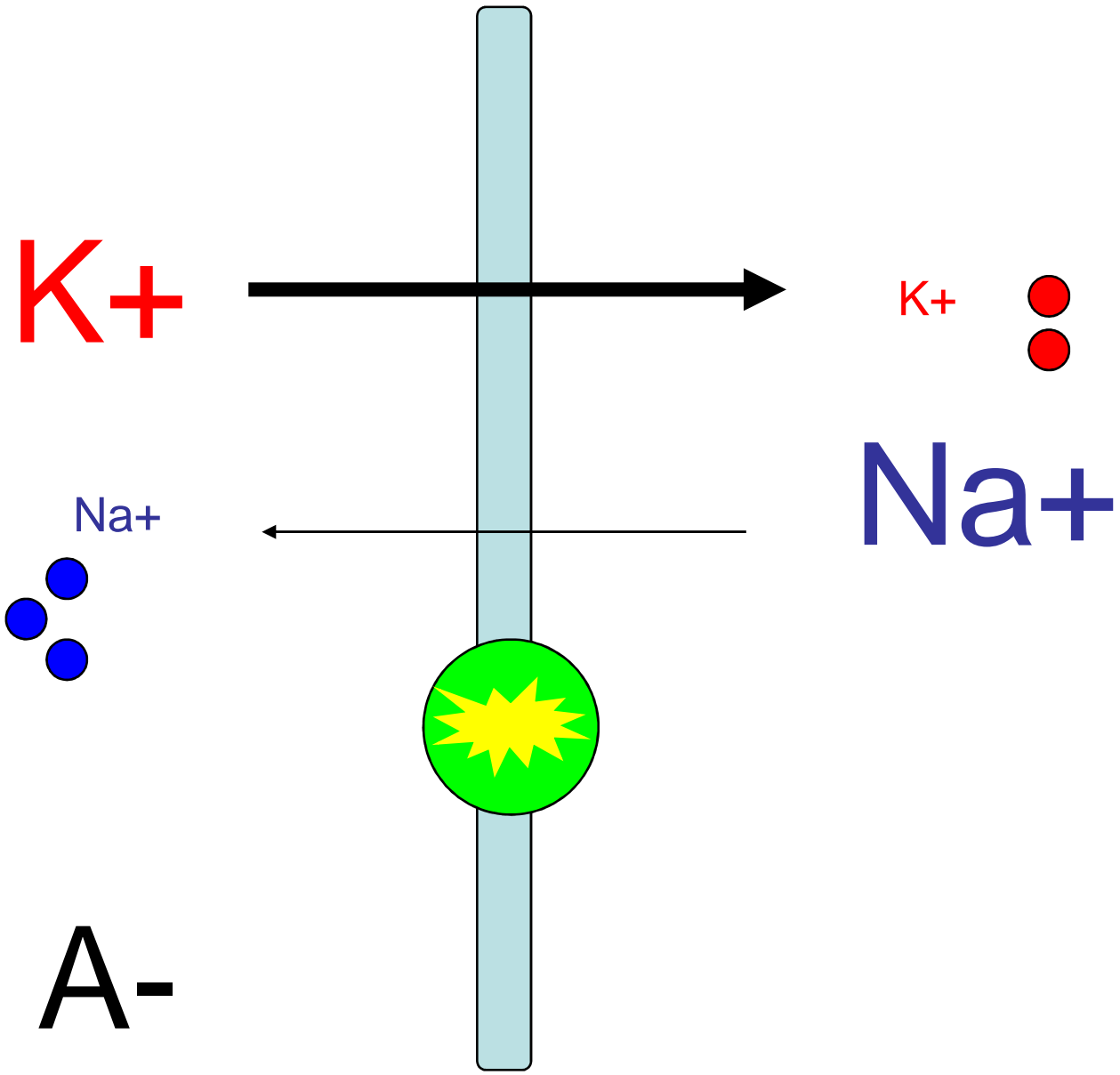
Na+

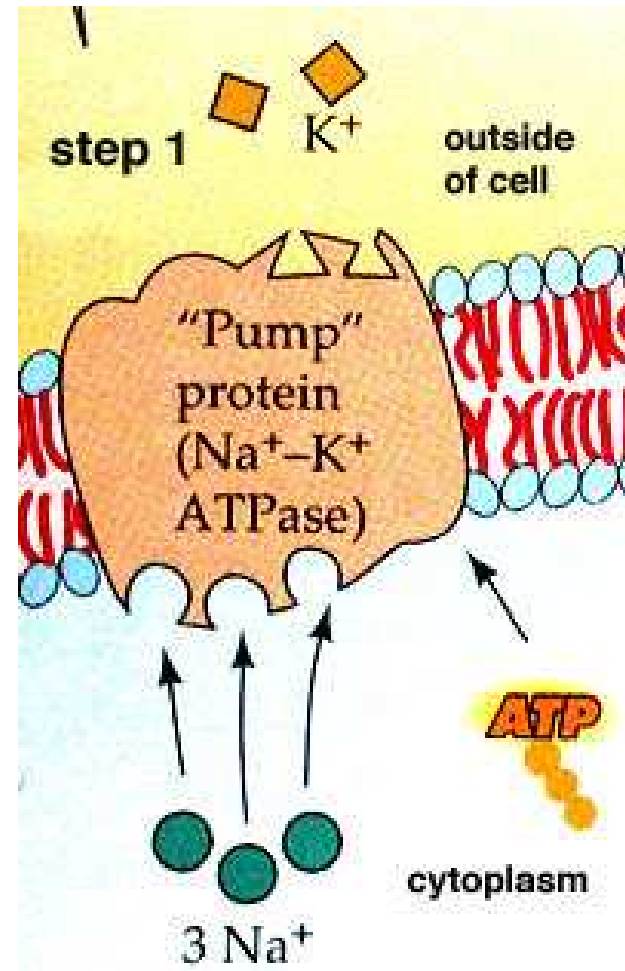
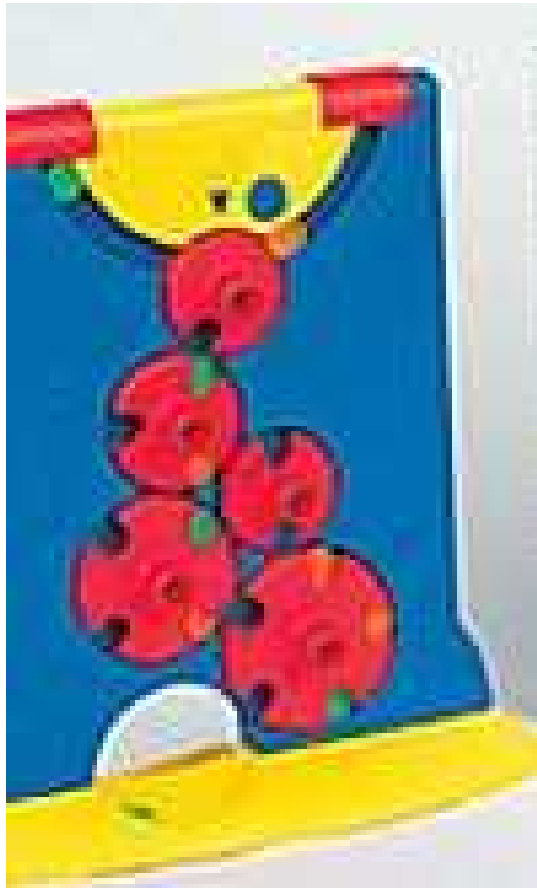
K+

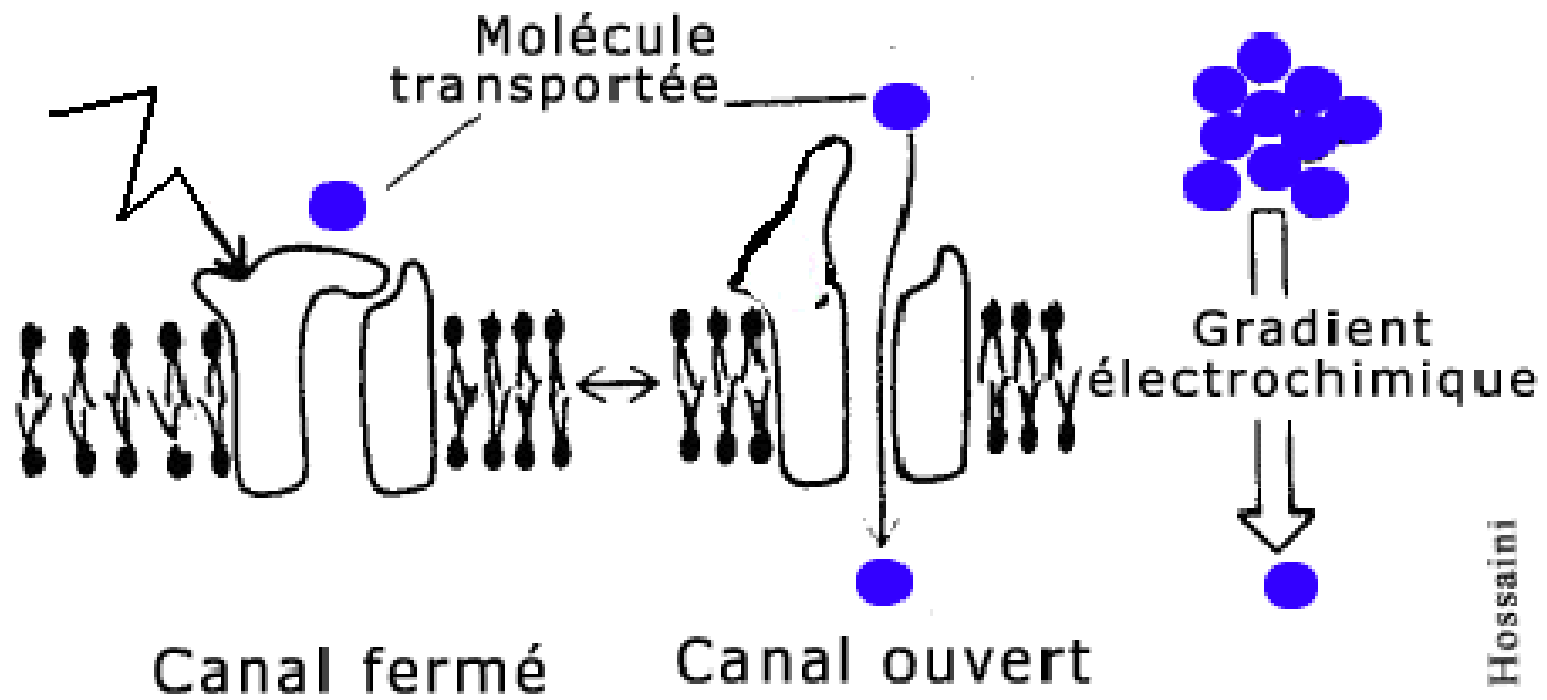




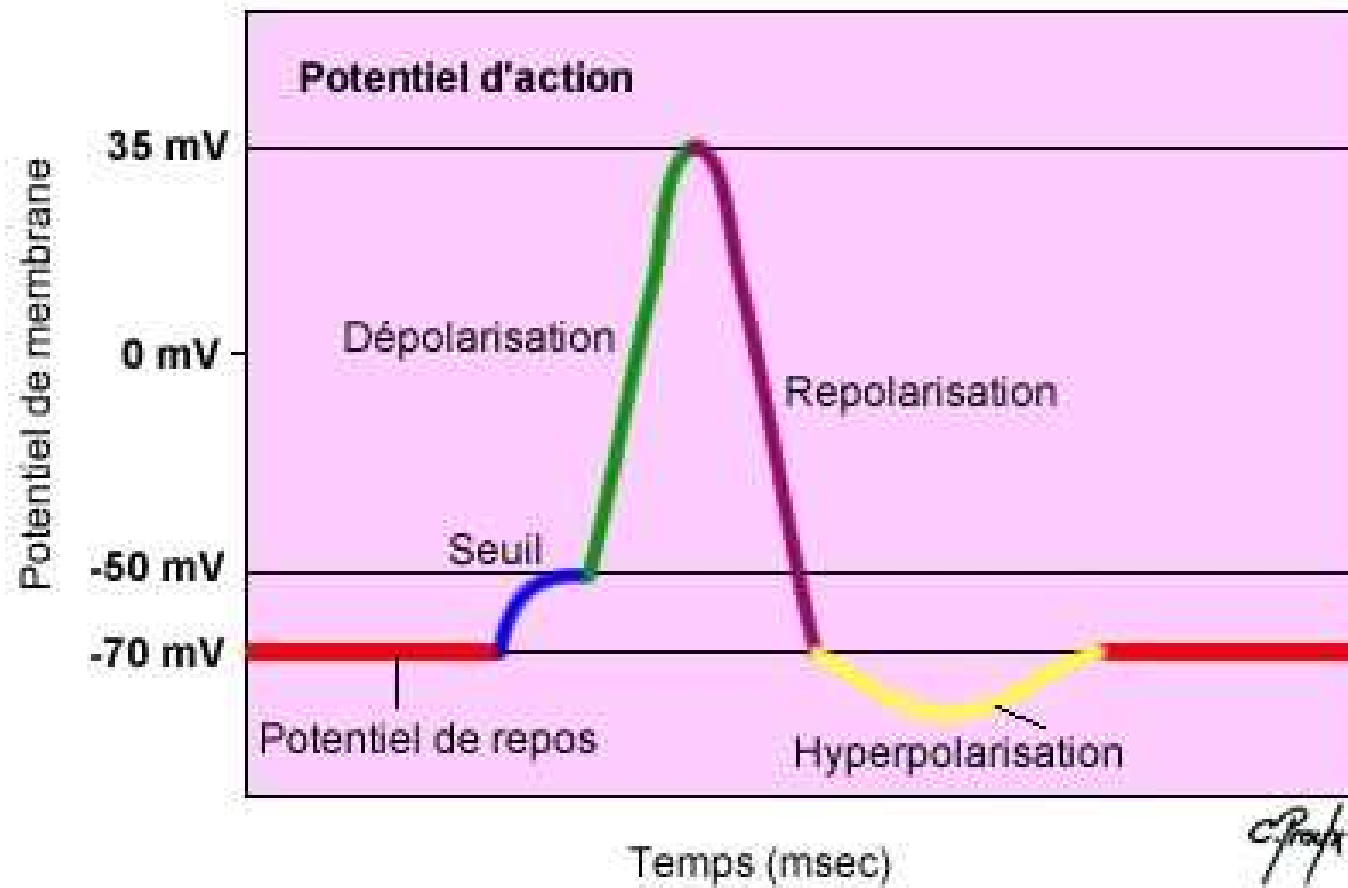


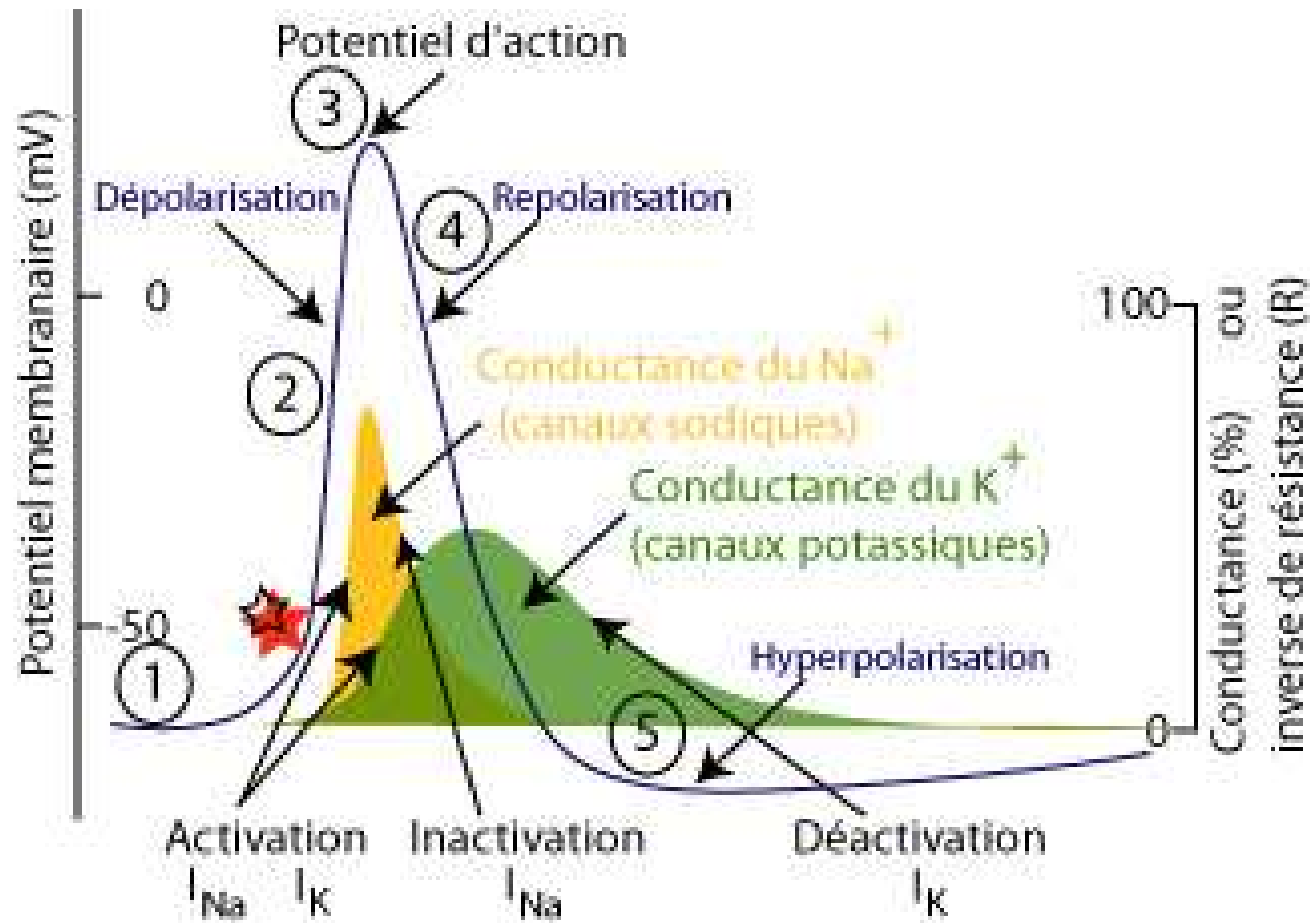


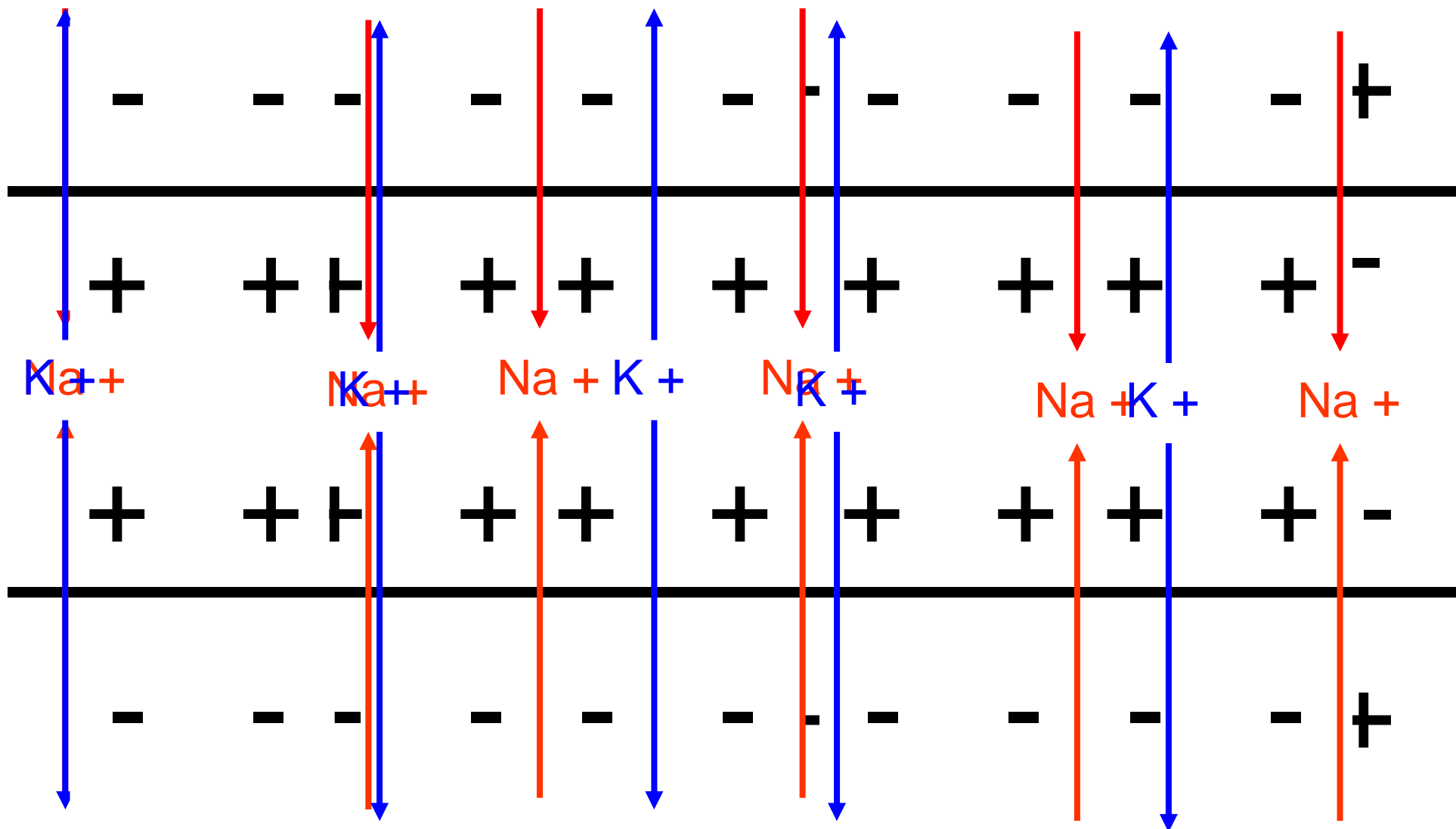




Hossaini







- - + + + + + + + + + + + + +

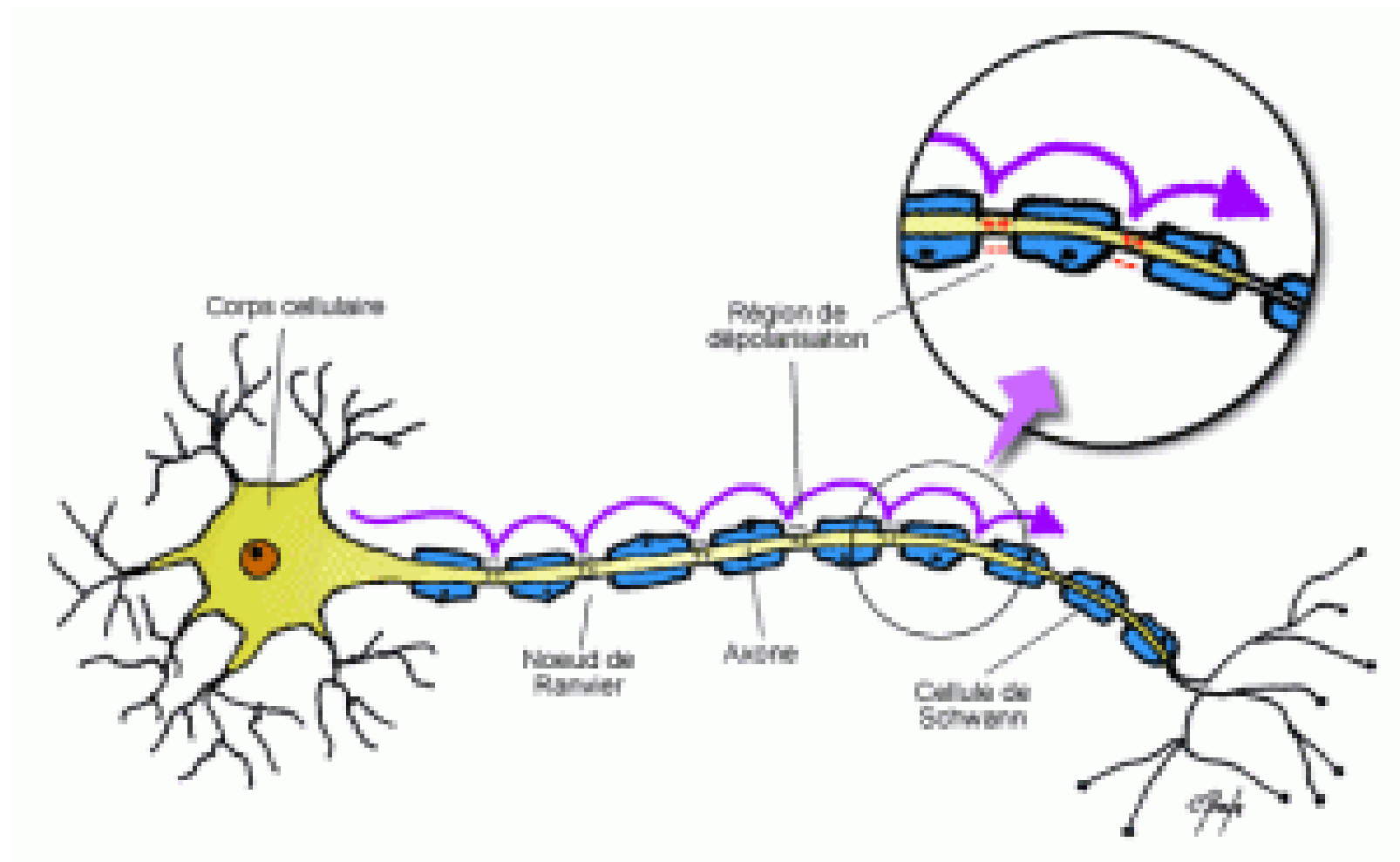


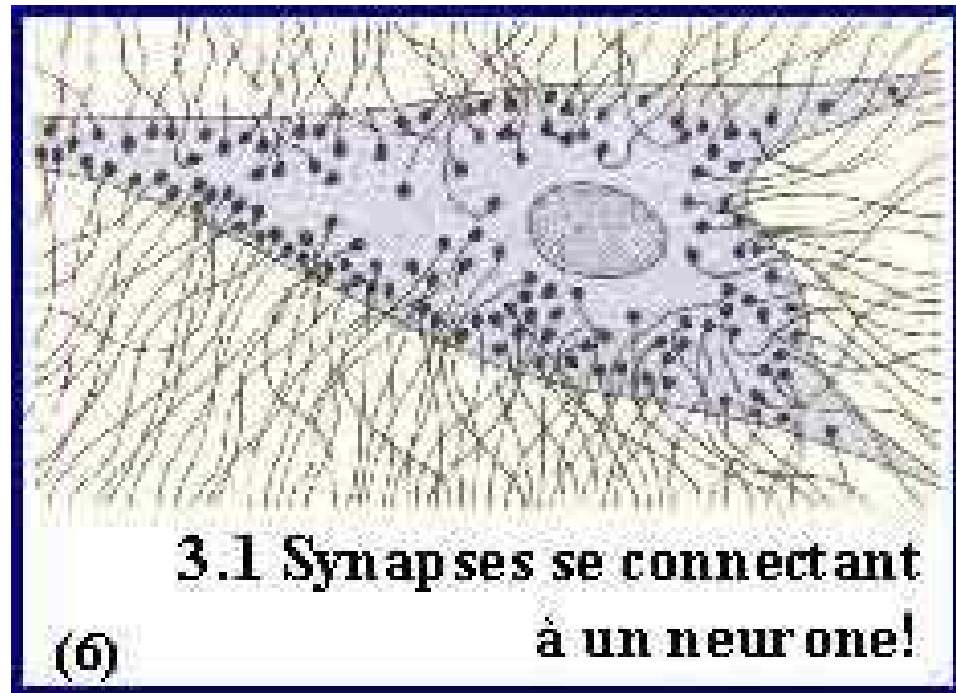
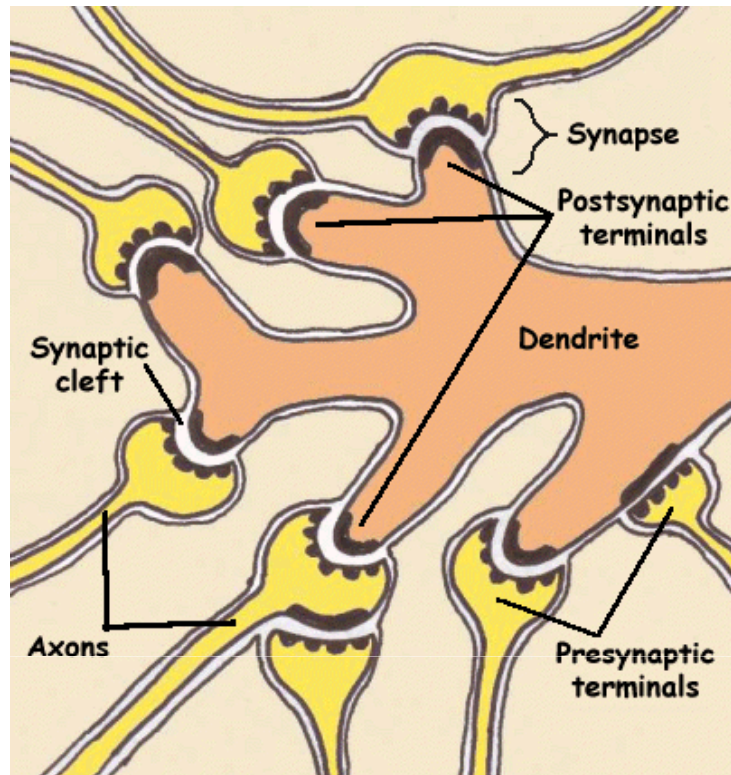
+ + - - - - - - - - - - -

+ + - - - - - - - - - - -

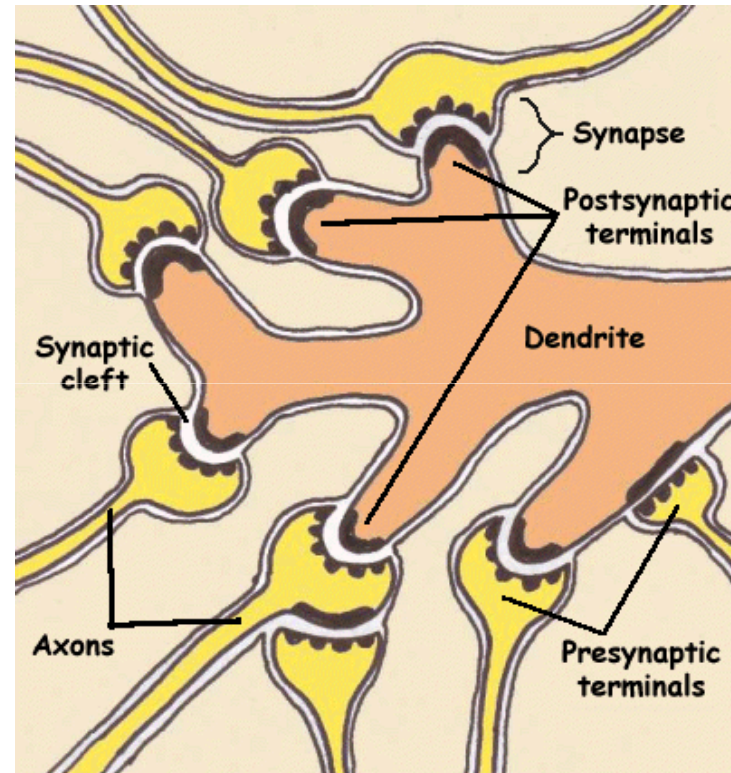


- - + + + + + + + + + + + + +





Synapse chimique



Synapse chimique

